

# GPS-Controlled Frequency Standards

910 & 910R

*Operators Manual*

1580336  
Second Edition July 2001

This manual, in whole or in part, may not be copied without permission.  
All product names are trademarks of their respective companies.  
© 2000 Pendulum Instruments AB  
All rights reserved. Printed in Sweden.

# Table of Contents

Warranty Statement . . . . .	I-IV	Front Panel Controls . . . . .	5-3
Declaration of Conformity. . . . .	I-V	Rear panel Outputs . . . . .	5-3
<b>1 Preface</b>		Test of PC-connection . . . . .	5-4
<b>Introduction . . . . .</b>	<b>1-2</b>	<b>6 Preventive Maintenance</b>	
<b>2 Preparation for Use</b>		Calibration . . . . .	6-2
<b>Safety Instructions . . . . .</b>	<b>2-2</b>	<b>7 Specifications</b>	
Introduction . . . . .	2-2	<b>Technical Specification - 910/910R</b>	
Safety Precautions . . . . .	2-2	<b>GPS-controlled Frequency Standards</b>	
Grounding . . . . .	2-2	. . . . .	<b>7-2</b>
<b>Unpacking . . . . .</b>	<b>2-4</b>	Frequency Stability . . . . .	7-2
Unpacking Instructions . . . . .	2-4	Ordering Information . . . . .	7-6
<b>Installation . . . . .</b>	<b>2-5</b>	<b>8 Appendix</b>	
Supply Voltage . . . . .	2-5	Appendix 1, Antenna Installation . . . . .	8-2
Orientation and Cooling . . . . .	2-5	Appendix 2, Device Error Messages . . . . .	8-9
Fold-down Support . . . . .	2-6	Appendix 3, Command Reference . . . . .	8-10
Rackmount Adapter . . . . .	2-6	Appendix 4, Remote Error Messages . . . . .	8-44
<b>3 Using the Controls</b>		<b>9 Index</b>	
Basic Controls . . . . .	3-2	<b>Index . . . . .</b>	<b>9-2</b>
Rear Panel . . . . .	3-3	<b>10 Service</b>	
Functional Description . . . . .	3-4	<b>Sales and Service Office . . . . .</b>	<b>10-II</b>
Indicators . . . . .	3-6		
Satellite Strength Bars . . . . .	3-7		
<b>4 GPS-View</b>			
Introduction . . . . .	4-2		
Installation . . . . .	4-2		
The GPS-View Screen . . . . .	4-3		
Graphs in GPS-View . . . . .	4-8		
<b>5 Performance Check</b>			
General Information . . . . .	5-2		
Preparations . . . . .	5-2		

# Warranty Statement

This **Fluke** guarantee is in addition to all rights which the buyer may have against his supplier under the sales agreement between the buyer and the supplier and according to local legislation.

**Fluke** guarantees this product to be free from defects in material and workmanship under normal use and service for a period of one (1) year from the date of shipment. This guarantee does not cover possible required re-calibration and/or standard maintenance actions. This guarantee extends only to the original end purchaser and does not apply to fuses, batteries, power adapters, or to any product or part thereof that has been misused, altered, or has been subjected to abnormal conditions of operation and handling.

**Fluke**-supplied software is guaranteed to be properly recorded on non-defective media. We will replace improperly recorded media without charge for 90 days after shipment upon receipt of the software. Our software is not guaranteed to be error free.

**Fluke's** obligation under this guarantee is limited to have repaired or replace a product that is returned to an authorized **Fluke** Service Center within the guarantee period, provided that **Fluke** determines that the product is defective and that the failure has not been caused by misuse, alteration or abnormal operation.

Guarantee service for products installed by **Fluke** will be performed at the Buyer's facility at no charge within **Fluke's** service travel area; outside this area guarantee service will be performed at the Buyer's facility only upon **Fluke** prior agreement and the Buyer shall pay **Fluke** round trip travel expenses.

If a failure occurs, send the product, freight prepaid, to the Service Center designated by **Fluke** with a description of the difficulty. At **Fluke's** option, repairs will be made or the product replaced. **Fluke** shall return the product, F.O.B. Repair Center, transportation prepaid, unless the product is to be returned to another country, in which case the Buyer shall pay all shipping charges, duties, and taxes. **Fluke** assume NO risk for damage in transit.

## Disclaimer

The foregoing guarantee is exclusive and is in lieu of all other guarantees, expressed or implied, including but not limited to any implied guarantee of merchantability, fitness, or adequacy for any particular purpose or use. We shall not be liable for any direct, indirect, special incidental, or consequential damages, whether based on contract, tort, or otherwise.

# DECLARATION OF CONFORMITY

for

**Fluke**

**GPS-Controlled Frequency Standard  
910 / 910R**

Fluke Precision Measurement Ltd.  
Norwich Airport Industrial Estate  
Norwich  
Norfolk NR6 6JB  
UK

## **Statement of Conformity**

Based on test results using appropriate standards, the product is in conformity with  
Electromagnetic Compatibility Directive 89/336/EEC  
Low Voltage Directive 73/23/EEC

### **Sample tests**

Standards used:

EN 61010-1 (1990) + A1 (1992) + A2 (1995) CAT II  
Safety Requirements for Electronic Measuring Apparatus

EN 61326-1 (1997)

Electrical equipment for measurement, control and laboratory use - EMC requirements

The tests have been performed in a typical configuration.

This Conformity is indicated by the symbol **CE**, i.e. “Conformité européenne”.

This page is intentionally left blank.

**Chapter 1**

# **Preface**

# Introduction

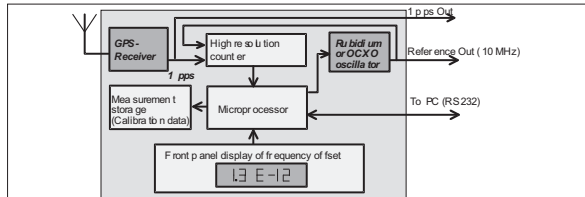
## Cesium controlled frequency via GPS satellites

The GPS-controlled frequency standards - 910 and 910R - deliver a precision frequency and time reference, everywhere in the world. They receive their long-term frequency stability from built-in Cesium-standards in the GPS-satellites. The 910/910R are designed to provide a very-high short-term stability. They are cost-efficient, traceable and extremely accurate frequency standards.

The 910/910R are very suitable as frequency standards in the telecommunication and electronics industry. They fit in the calibration laboratory, as frequency reference in test systems and as a local reference in the design department.

external frequency comparator and an external frequency standard for comparison.

Now the timer/counter (frequency comparator) and a very stable secondary standard is together with the GPS receiver built into one and the same box, see fig. 2. The received GPS-signal is continuously measured against the local oscillator and the frequency deviation is stored in a non-volatile storage and can at any time be transferred to a PC for print-out of a traceability



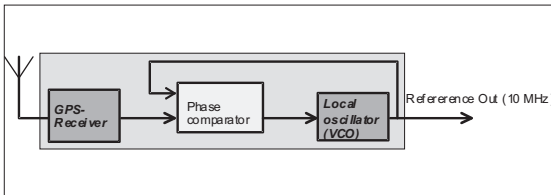
**Figure 1-2.** The 910/910R have built-in comparison between the GPS-receiver and the internal oscillator.

## Unique traceable frequency standard

Off-air frequency standards have existed for several years with the same internal architecture, see figure 1. The unit is a “black box” for the user, with an antenna input and a frequency output. The control process (disciplining) of the local oscillator is totally hidden for the user. The only way to monitor the performance is to use an

record. The unbroken calibration history chain - day by day - is maintained in the non-volatile memory for several years. Furthermore the current 24h mean offset is continuously displayed on the front panel.

## Optional outputs



**Figure 1-1.** A typical “black-box GPS-receiver.

The 910 (high-stability oven) and 910R (rubidium atomic clock) come as standard with one 5 MHz and five 10 MHz sinewave outputs. Also as standard there is a 1 pps (one pulse per second) output. There are four options that may be chosen, options 70, 71, 72 and option 75. Options 70, 71 and 72



allow for five extra frequency outputs to be mounted and are mutually exclusive.

Option 70 gives 5 extra 10 MHz outputs.

Option 71 gives four 1Vrms sine wave outputs of resp. 10 MHz, 5 MHz, 1 MHz and 0.1 MHz, plus a 0.1 MHz square wave output.

Option 72 gives five extra 2.048MHz outputs for telecommunication testing and clock synchronization (G.703:10)

Option 75 allows the user to define his own pulse frequency output, as long as the pulse period is an integer multiple of 100 ns.

## Two operating modes

To fully eliminate long-term frequency changes (aging) you should have an automatic adjustment (known as disciplining). This disciplined mode is the default mode in the 910/910R. As long as there is a valid satellite signal, the internal local oscillator is monitored and adjusted. When using the received GPS-signal for disciplining, the stability is reduced for averaging times of 100s to 1000s.

The manual Hold-over mode removes the automatic adjustment, thereby improving the short-term stability. This mode is intended for critical applications, like jitter and wander measurements, where the frequency standard used, must have an excellent short-term stability.

The manual Hold-over mode makes it possible to temporarily switch over from disciplined to Hold-over mode during the actual measurement, thereby achieving a superior frequency accuracy at the start of the measurement and a superior stability through the measurement.

## Made for portability too

When using manual Hold-over mode, the 910/910R acts like a stand-alone OCXO or Ru-

bidium frequency standard. This means that 910/910R are up and running after just 10 minutes after a change of location.

## Best of two worlds

The 910 and 910R have a unique design with a built-in measurement kernel for continuous comparison of two independent frequency sources; the received 1pps signal from the GPS-satellites and the very high-stability internal oscillator. Thanks to this design, the very-high stability built-in Rubidium or OCXO oscillator is continuously calibrated and traceable to the primary frequency standards in the US Naval Observatory, and ultimately to all national standards (e.g. NIST, NPL, PTB, SP etc.) In the disciplined mode, the calibration data is used to adjust the internal oscillator to fully compensate for the aging of the local oscillator.

This page is intentionally left blank.

Chapter 2

# Preparation for Use

# Safety Instructions

## Introduction

Read this page carefully before you install and use the instrument.

This instrument has been designed and tested according to safety Class 1 requirements of EN61010-1 and CSA 22.2 No.1010.1, and has been supplied in a safe condition. The user of this instrument must have the required knowledge of it. This knowledge can be gained by thoroughly studying this manual.

This instrument is designed to be used by trained personnel only. Removal of the cover for repair or rack-mounting of the instrument must be done by qualified personnel who are aware of the hazards involved. There are no user-serviceable parts inside the instrument.

## Safety Precautions

To ensure the correct and safe operation of this instrument, it is essential that you follow generally accepted safety procedures in addition to the safety precautions specified in this manual.

### Caution and warning statements

**CAUTION:** Shows where incorrect procedures can cause damage to, or destruction of equipment or other property.

**WARNING:** Shows a potential danger that requires correct procedures or practices to prevent personal injury.

## Symbols



Shows where the protective ground terminal is connected inside the instrument. **Never** remove or loosen this screw.



Indicates that the operator should consult the manual.

## If in doubt about safety

Whenever you suspect that it is unsafe to use the instrument, you must make it inoperative by doing as follow

- Disconnect the line cord
- Clearly mark the instrument to prevent its further operation
- Inform your local Fluke Service Center.

For example, the instrument is likely to be unsafe if it is visibly damaged.

## Fuse

A 1.6A/250V slow blow fuse is placed in the internal power supply.

**CAUTION: If this fuse is blown, it is likely that the power supply is badly damaged. Do not replace the fuse. Send the instrument to your local Service Center.**

## Grounding

Whenever an instrument is connected to the line voltage, a grounding fault will make it potentially dangerous. Before connecting any unit to the power line, you must make sure that

the protective ground functions correctly. Only then can a unit be connected to the power line and only by using a three-wire line cord. No other method of grounding is permitted. Extension cords must always have a protective ground conductor.

**WARNING: If a unit is moved from a cold to a warm environment, condensation may cause a shock hazard. Ensure, therefore, that the grounding requirements are strictly met.**

**WARNING: Never interrupt the grounding cord. Any interruption of the protective ground connection inside or outside the instrument or disconnection of the protective ground terminal is likely to make the instrument dangerous.**

# Unpacking

## Unpacking Instructions

Check that the shipment is complete and that no damage has occurred during transportation. If the contents are incomplete or damaged, file a claim with the carrier immediately. Also notify your local Fluke sales or service office in case repair or replacement may be required.

### Check list

The shipment should contain the following:

- The frequency standard.
- Line cord.
- GPS-View™ program disk.
- This Operators Manual.
- If you ordered one of the options 70, 71, 72 and/or option 75, they should already be installed. See “Identification” below.
- Other options you ordered, e.g. antenna (option 01), antenna cable (option 02), rack mount kit (PM9622) or carrying case (PM9627) are shipped in separate boxes.
- Certificate of Calibration.

### Identification

Options installed inside the cover are identified on the rear panel according to the list below.

Option 70: 5 BNC-connectors mounted in the area designated “Optional 10 MHz Outputs”.

Option 71: 5 BNC-connectors mounted in the area designated “Option 71 Outputs”.

Option 72: 5 BNC-connectors mounted in the area designated “Option 72 Outputs”.

Option 75: 1 BNC-connector mounted in the area designated “Optional Pulse Output”.

# Installation

## Supply Voltage

### Setting

The GPS frequency standard may be connected to any AC supply with a voltage rating of 100 to 240 V<sub>rms</sub>, 47 to 63 Hz. The frequency standard automatically adjusts itself to the input line voltage.

### Fuse

A 1.6A/250V slow-blow fuse is placed inside the frequency standard. This fuse rating is used for the full voltage range.

**CAUTION: If this fuse is blown, it is likely that the power supply is badly damaged. do *not* replace the fuse. Send the frequency standard to the local Fluke Service Center.**

### Grounding



Grounding faults in the line voltage supply will make any instrument connected to it dangerous. Before connecting any unit to the power line, you must make sure that the protective ground functions correctly. Only then can a unit be connected to the power line and only by using a three-wire line cord. No other method of grounding is permitted. Extension cords must always have a protective ground conductor.

**WARNING: If a unit is moved from a cold to a warm environment, condensation may cause a shock hazard. Ensure, therefore, that the grounding requirements are strictly met.**

**WARNING: Never interrupt the grounding cord. Any interruption of the protective ground connection inside or outside the instrument or disconnection of the protective ground terminal is likely to make the instrument dangerous.**

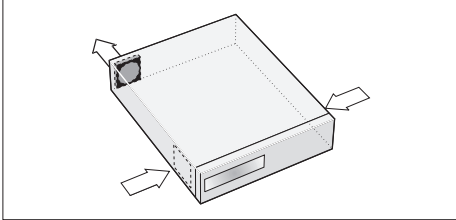
## Orientation and Cooling

The frequency standard can be operated in any position desired. Make sure that the air flow through the ventilation slots are not obstructed. Leave 1 centimeter (½ inches) of space around the 910/910R.

**CAUTION: Never cover the ventilation slots at the right or left side. If the slots are covered, the frequency standard will overheat.**

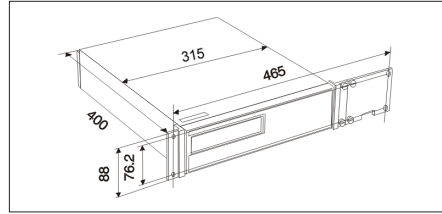
## The 910/910R fan control

The fan is used to adjust the temperature inside the frequency standard to compensate for variations in ambient temperature.



**Figure 2-1** Air flow through the 910/910R.

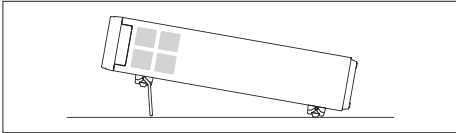
## Rackmount Adapter



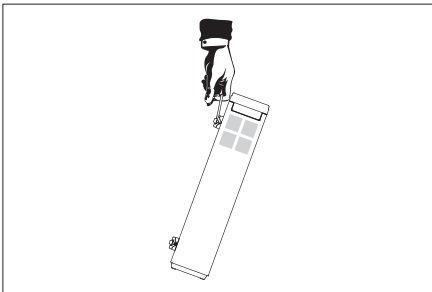
**Figure 2-4** Dimensions for rackmounting hardware.

## Fold-down Support

For bench-top use, a fold-down support is available for use underneath the frequency standard. This support can also be used as a handle to carry the instrument.



**Figure 2-2** Fold-down support for comfortable bench-top use.



**Figure 2-3** Use the support to carry the frequency standard.

If you have ordered a 19 inch rack mount kit for your instrument, it has to be assembled after delivery of the instrument. The rack mount kit consists of the following:

2 brackets, (short, left; long, right)

4 screws, M5 x 8

4 screws, M6 x 8

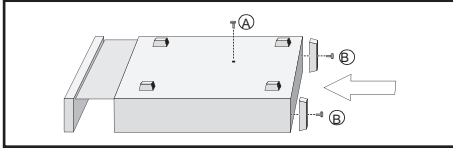
**WARNING:** When you remove the cover you will expose live parts and accessible terminals which can cause death.

**WARNING:** Capacitors inside the instrument can hold their charge even if the instrument has been separated from all voltage sources.



## Assembling the rackmount kit

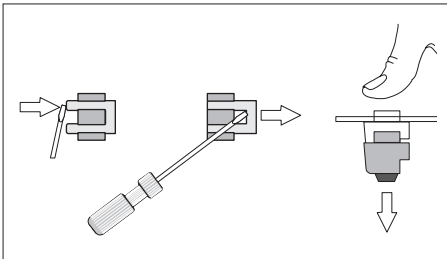
- Make sure the power cord is disconnected from the frequency standard.
- Turn the frequency standard upside down.



**Figure 2-6** Remove the screws and push out the frequency standard from the cover.

- Loosen the two screws **(B)** in the rear feet.
- Grip the front panel and gently push at the rear.
- Pull the frequency standard out of the cover.
- Remove the four feet from the cover.

Use a screwdriver as shown in the illustration or a pair of pliers to remove the springs holding each foot, then push out the feet.



**Figure 2-5** Removing feet from the cover.

- Remove the two plastic labels that cover the screw holes on the right and left side of the front panel.

- Push the frequency standard back in the cover.
- Turn it upside down.
- Install the two rear feet with the screws **(B)** to the rear panel.
- Fasten the brackets at the left and right side with the screws included.
- Fasten the front panel and mounting plate.

### ■ Reversing the rackmount kit

The frequency standard may also be mounted to the right in the rack. To do so, first remove the plate on the long bracket and fasten it on the short one, then perform the preceding steps.

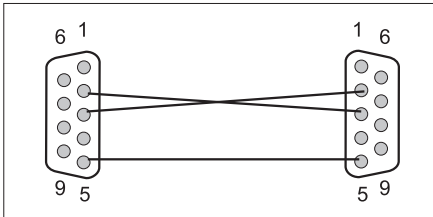
## Antenna installation

The antenna (option 01), is intended for outdoor mounting on a wall or preferably on a roof. The more free sky that is visible from the antennas position, the better the satellite contact.

The antenna cable (option 02) is a 20 meter high quality RG213 cable that connects in one end to the antenna and in the other end to the rear panel of the frequency standard. For installation details and instructions on connecting other antennas/cables than those supplied by Fluke, please consult Appendix 2 in this manual.

## Connecting to a PC

A PC is connected to the RS232-port at the rear of the instrument. A cable for connecting to a PC should have female DB9-connectors in both ends and be designed as a “null-modem” cable.



**Figure 2-7** Connecting to a PC

**Chapter 3**

# **Using the Controls**

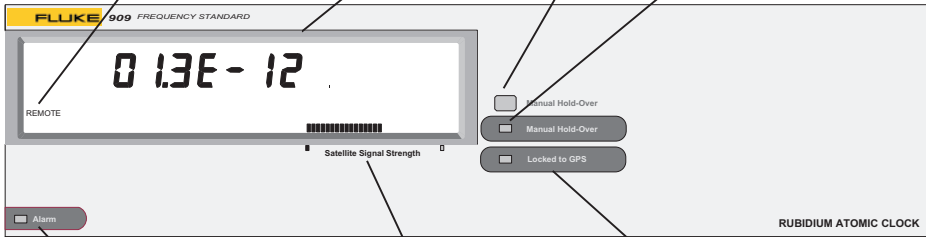
# Basic Controls

Display of the relative mean frequency offset during the last 24h. This offset is recalculated every 15 minutes. To obtain the frequency offset value in Hz, multiply the display value with 10 MHz ( $10^{+7}$  Hz). E.g.  $1.7 \text{ E } 10^{-12}$  displayed means an offset of  $1.7 * 10^{-12} * 1 * 10^{+7} = 1,7 * 10^{-5} = 17 \mu\text{Hz}$ .

Manual Hold-Over key toggles manual Hold-over mode on-off. In Hold-over mode, GPS-disciplining is disabled, resulting in an improved short-medium term stability.

REMOTE indicates that the front panel operation is locked out.

Indicates status of Manual Hold-Over .

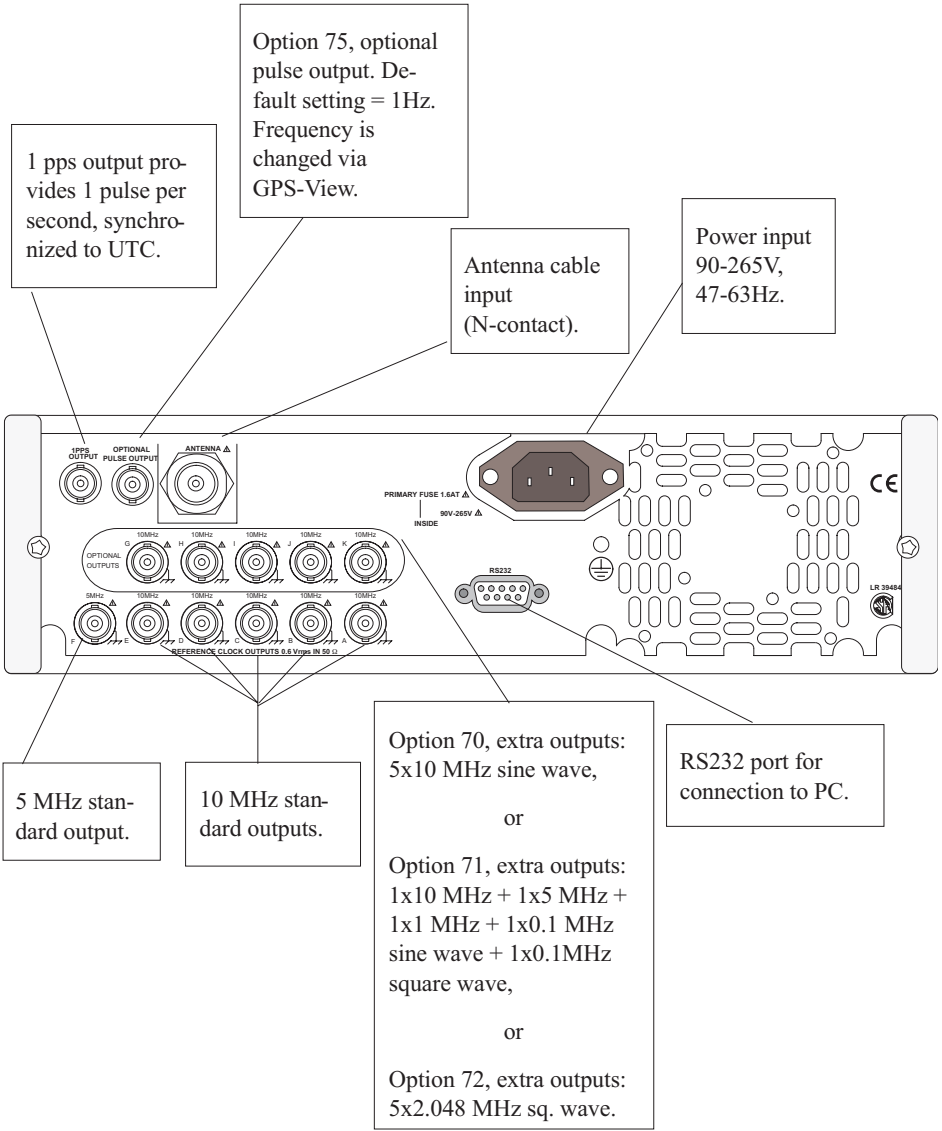


Alarm indicator warns of e.g. internal instrument errors, GPS-receiver errors or antenna disconnection. An error message is always displayed in the 7-segment display area.

A 21-segment bar graph display showing combined satellite signal strength. The unit will operate in the GPS-disciplined mode, with just two tracked satellites.

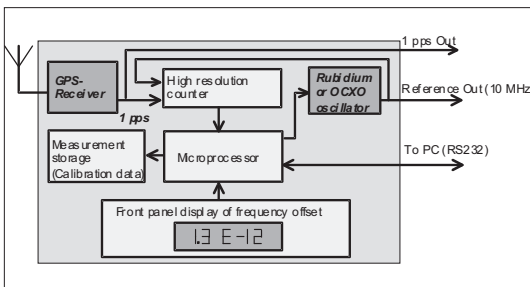
When Locked to GPS is lit, the frequency standard operates in disciplined mode and there is sufficient GPS-satellite contact. When not lit, the frequency standard operates in Hold-Over mode, whether manual or caused by insufficient GPS-signal reception.

# Rear Panel



# Functional Description

The 910 and 910R are GPS-controlled frequency standards, that are continuously calibrated to the GPS-signal of one or several satellites. The GPS-signal has a very low long-term uncertainty of  $5 \cdot 10^{-13}$  per 24h, and is traceable to US Naval Office (USNO) and ultimately to NIST and other national standards for time and frequency. The 910/910R contain a GPS-receiver module, generating a stable 1 pps signal, plus a voltage controlled local oscillator and a high resolution measurement kernel that is continuously phase comparing the received GPS-signal and the local oscillator. This means that the local oscillator is continuously calibrated. The result of this comparison, i.e. calibration, is stored in the unit once every 30 s. From the collection of phase calibration data, a frequency offset is calculated and displayed as a 24h mean frequency offset. Also the 24h frequency calibration data is stored internally once per 24h in non-volatile memory.



**Figure 3-1.** The 910/910R have built-in comparison between the GPS-receiver and the internal oscillator.

The 910/910R can operate in two different modes. Either the local oscillator is free-running with a frequency offset that increases with time, due to aging. Or the calibration result is used to adjust the local oscillator, thereby compensating for aging. These two modes are called:

- Hold-Over mode (free-running local oscillator)
- Disciplined mode (controlled and adjusted local oscillators)

In both modes, the local oscillator is always calibrated as long as there is GPS-contact. Disciplined mode is the default mode. Hold-over mode is automatically entered when GPS-disciplining fails for some reason (e.g. loss of GPS-contact). Hold-Over mode can also be forced via the manual Hold-Over key or via program commands over the RS 232 port. When GPS-contact is lost, the 910/910R can not be continuously calibrated (intercompared with GPS in real time) and reverts temporarily to Hold-Over mode specifications.

## Pros and Cons

**Disciplined mode** gives the user problem free operation, the frequency standard has no long term drift because it is adjusted when needed. It is the preferred mode for stationary operation.

**Hold-over mode** is ideal for portable operation after change of location. Unlike the frequency standards that always use disciplined mode, a 910/910R is ready to operate within 10 minutes after power-on at the new location. Hold-over mode is also preferred when short-medium term stability is critical,

e.g. when used as frequency source for clock wander measurements in SDH/SONET telephone systems. The nature of disciplining would cause some additional local oscillator instabilities for averaging times of 100-1000 seconds. This is avoided by selecting manual Hold-over.

## Measurement Principle

Every 30s phase difference, the so called TIE (Time Interval Error) is measured between the 1pps signal and the interval oscillator. This phase difference is measured as the time interval between the zero crossings of the signals. If there is a frequency offset from the nominal, the TIE-value (time interval) will increase or decrease between successive measurements. E.g. if the TIE-value = +5ns at time 0 and is -15ns 10 000 seconds later, then the corresponding difference in frequency is:

$$\frac{TIE(2) - TIE(1)}{time(2) - time(1)} = \frac{-15 - 5ns}{10000 - 0s} = \frac{-20ns}{10000s} = 2 * 10^{-12}$$

The 910 and 910R calculate the frequency offset in just this way. Multiple TIE-value differences over longer time periods are used to calculate frequency offset over 24h, between the local oscillator and GPS.

Note: The frequency is very unstable during the first 5-10 minutes after power-on of a “cold” unit.

Note: The calculated 24 h frequency offset may be outside the specification during the first couple of days of operation.

# Indicators

Led	Display	Meaning
Manual Hold-over ON	Frequency offset	Manual Hold-over selected by user. There is , or has recently been, sufficient GPS-contact. Calibration process is valid.
Manual Hold-over ON	Time-of-day	Manual Hold-over selected by user. GPS-time data is valid. The time-of-day display is selected instead of freq. offset OR operation <24h from power-on or poor GPS-contact for a long time.
Manual Hold-over ON	“910” or “910R”	Manual Hold-over selected by user. Temporarily no valid calibration or GPS-time data.
Locked to GPS ON	Frequency offset	Disciplined mode. There is GPS-contact. Calibration process is valid.

Led	Display	Meaning
Locked to GPS ON	Time-of-day	Disciplined mode. There is GPS-contact. GPS-time data is valid. The time-of-day display is selected instead of freq. offset OR operation <24h from power-on or poor GPS-contact for a long time.
Locked to GPS ON	“910” or “910R”	Disciplined mode. There is GPS-contact. Operation <24h from power-on or poor GPS-contact for a long time. This message may temporarily occur, during start-up.
Alarm ON	GPS fail	An error occurred in the GPS-receiver.
	No antenna	Antenna or cable has been disconnected.
	Ant. O.Curr	Antenna over-current. Check for short-circuited antenna or cable.



Led	Display	Meaning
Alarm ON	Adj range	Out of adjustment range. Can no longer discipline local oscillator. Try to disconnect - reconnect the 910/ 910R. If the error remains contact your local service center
	Err Ra	RAM error detected at power-on.
	Err Ro	ROM error detected at power-on.
	Err ASIC	Measurement logic error detected at power-on.
	Error	Other error
	Rb. Unloc'd	Rubidium reference unlocked.
Locked to GPS OFF	----	Hold-Over mode. No GPS-contact.

## Satellite Strength Bars

Bars	Description
0	No antenna
1	Antenna connected, but no satellite
4	Absolute minimum required to maintain a lock to GPS
7	Absolute minimum required for first lock
11	Good reception
21	Very good reception

This page is intentionally left blank.

Chapter 4

# GPS-View

# Introduction

## GPS-View SW

GPS-View is a Windows 95/NT- program that communicates with the GPS-controlled frequency standard. Its main purpose is to provide a traceable calibration document based on the 24h frequency offset values, internally stored in the non-volatile memory of the 910/910R. It is only necessary to connect a PC to the 910/910R once every second year to obtain an unbroken traceability chain since first use. If a PC is permanently connected, short-term phase variation can also be continuously monitored.

From GPS-View, the user can control the operating mode (disciplined or Hold-over), and lock the front panel to prevent unintended change via the “manual Hold-over“ key.

GPS-View can perform the following tasks:

*Transfer of archived data from non-volatile memory in 910/910R*

- 24h frequency offset values, updated once per 24 h (2 years of data, with normal usage).
- daily Adjustment Control Voltage values (2 years of data).

*Transfer of stored data from volatile memory in 910/910R*

- 1h frequency offset values, updated every 15 minutes (approx. 1 week of data).
- 24 h frequency offset values, updated every 15 minutes (approx. 1 week of data)
- phase deviation every 30 s (approx. 2 days of data).

*Transfer of control commands to 910/910R*

- Setting display option: time-of-day or frequency offset
- Setting the pulse output period and width (opt. 75).

- Setting of instrument parameters.
- Toggle between Hold-over or Disciplined mode.
- Local lockout of front panel buttons.
- Perform internal self-tests.

*Graphical display (x-t graphs):*

- 24 h frequency offset vs. time (“frequency history”).
- adjustment history.
- phase deviation (volatile data).
- 1 h frequency offset (volatile data)
- 24 h frequency offset (volatile data)

*Text display of:*

- GPS status, e.g. no. of satellites, status, position etc.
- time-of-day (UTC-time +time zone correction).

*Print-out of:*

- traceable calibration protocol
- any graph.

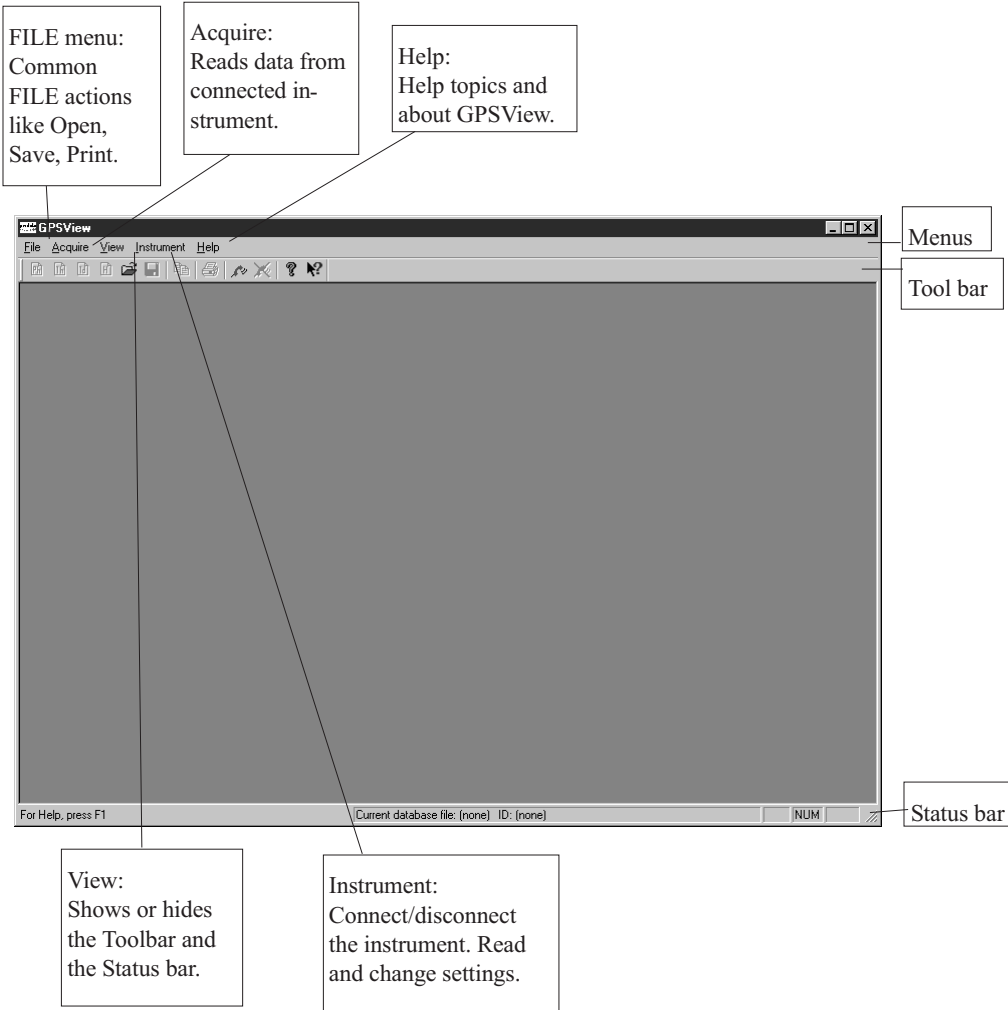
*File storage:*

- 24h offset and adjustment values (main database file).
- any graph data

## Installation

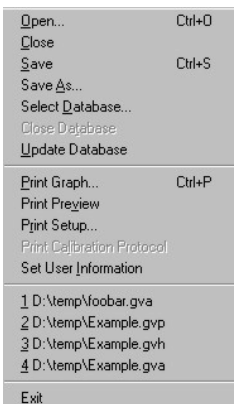
Run the installation program SETUP.exe from installation disk 1. Follow the instruction on screen.

# The GPS-View Screen



## FILE menu

Open:	open an existing data set
Close:	close the active graph
Save:	save the data of the active graph
Save as:	save the data of the active graph with a new name
Select database:	select the database to use for the reference history
Close database:	close the currently selected database
Update database:	update the current database archive
Print graph:	print the active document
Print preview:	display the active graph in print preview mode
Print setup:	change the printer and printing options
Set user information:	enter user name, company name and other relevant user info (free field text entry) for use in the calibration protocol
Print calibration protocol:	print a traceable calibration protocol referring the reference to GPS
Exit:	quit the application



### ■ Print calibration protocol (FILE menu)

By selecting “Print calibration protocol” the stored calibration data (24h mean frequency offset) is retrieved from the Archived file, i.e. the instrument “database”. This file is normally called “Reference History” and printed on the selected printer.

The instrument ID in the protocol is automatically fetched from the connected instrument.

The user ID is fetched from the Registry information (Windows). Before the first calibration protocol print-out, the user information must be entered via “Set user information” (FILE menu). The user can enter arbitrary information on max. 6 lines (e.g. Name, company name, address etc.). Once entered, this information will automatically be fetched for future calibration protocols.

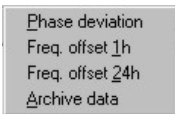
### ■ Update database

The database file (default name is “Reference History”) receives new data from the connected instrument when “update database” is selected. It is sufficient to update the database once every second year for an unbroken chain of frequency offset values (24h average). However, to update with uncertainty estimates as well, the database should be updated once every day.

## Acquire menu

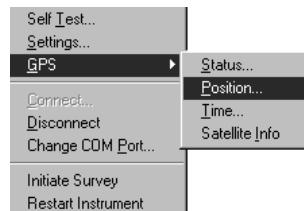
Reads data from connected instrument. You can choose between:

Phase deviation:	get a new phase deviation graph
Frequency offset 1 hour:	get a new 1 h mean frequency offset graph
Frequency offset 24 hours:	get a new 24 h mean frequency offset graph
Archived data:	get a new graph of frequency reference history



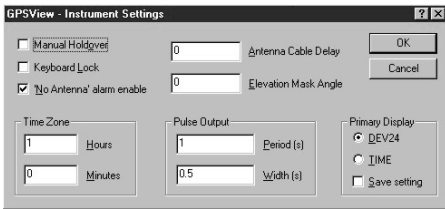
## Instrument menu

Self-test:	run instrument self-test
Settings:	instrument settings control panel
GPS - status:	display GPS receiver status
position:	display current GPS position
time:	display current GPS time
satellite info:	get satellite information from the GPS receiver
Connect:	connect to instrument
Disconnect:	disconnect from instrument
Change COM port:	change the COM port used to communicate with the instrument
Initiate survey:	initiate GPS receiver position survey
	<b>Warning: This may cause unstable frequency output for several hours.</b>
Restart instrument:	restart the instrument
	<b>Warning: This may cause unstable frequency output for several hours.</b>



## ■ Instrument settings dialog box

This dialog box shows you the current values of the instrument settings, and lets you change them. Note that frequent changes of values stored in non-volatile memory will decrease the memory available for the archive data in the instrument's non-volatile memory.



### Manual Holdover

Check this if you want to force the frequency reference into holdover (free running) mode, and uncheck it if you want the reference to be disciplined by GPS.

### Keyboard Lock

Check this to lock the front panel key, and uncheck it to allow front panel access.

### 'No Antenna' alarm enable

If you have a GPS antenna that uses less power than the GPS receiver expects, a 'No Antenna' alarm is normally shown, but the GPS receiver should work anyway. If you have such an antenna, you probably want to disable the alarm by unchecking this box, otherwise you are advised to leave it enabled. This enable status is stored in non-volatile memory.

### Antenna Cable Delay

If you wish to have the best possible synchronization of the 1 pps output to UTC, you should specify the delay of the GPS antenna cable here. Check the specification for the cable, or - as a rule of thumb - assume a delay of 5 ns/m. This value is stored in non-volatile memory.

### Elevation Mask Angle

The GPS receiver will not attempt to track any satellite that is predicted to be below the elevation mask angle. If the GPS antenna has a free horizon view, this value should normally be left at zero, but if the horizon is hidden, you may wish to increase the value in order to lessen the risk of the GPS receiver trying to track erroneous signals. This value is stored in non-volatile memory.

### Time Zone

Set these values according to your time zone if you wish the instrument to report local time rather than UTC. You will need to change these values to compensate for Daylight Savings Time, if that is in effect. These values are stored in non-volatile memory.

### Pulse Output (Option 75 only)

Set the pulse period and pulse width to whatever values you wish to have on your programmable pulse output. The period should be between 200 ns and about 27 s, and the width between 100 ns and about 27 s. Both can be set with a resolution of 100 ns. These values are stored in non-volatile memory.

### Primary Display

This setting lets you decide whether the 24-hour mean frequency offset or the current time should have higher priority to the display. At any time, the display shows the highest priority message that is available and considered valid. The priority order is:

- Alarms
- Other system messages
- DEV24 and TIME in the order you set
- Instrument type

If you check the 'save setting' box, the setting will be stored in non-volatile memory, otherwise in volatile memory only.



## Edit menu

Copy: Copy the selection and put it on the clipboard

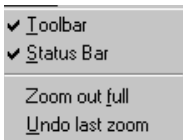
## View menu

Toolbar show or hide the toolbar

Status bar: show or hide the status bar

Zoom out full: zoom out to full graph display

Undo last zoom: undo the last zoom



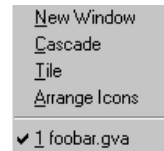
## Window menu

New window: open another window for the active document

Cascade: arrange windows so they overlap

Tile: arrange windows as non-overlapping tiles

Arrange icons: arrange icons at the bottom of the window

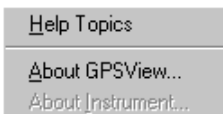


## Help menu

Help topics: list help topics

About GPSView: display program information, version number and copyright

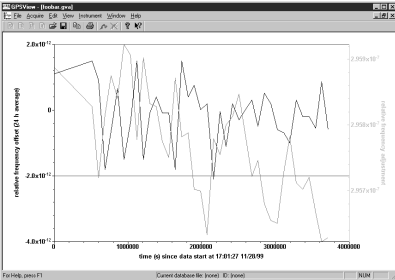
About instrument: display instrument information



# Graphs in GPS-View

## File-type

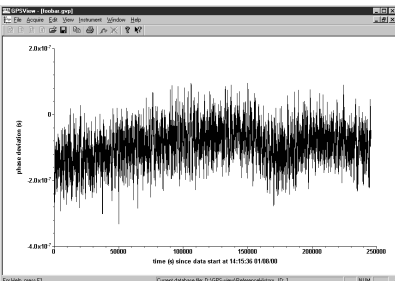
### ■ GVA: GPSView archived



This is a file containing the archived frequency offset data and the archived adjustment data. The data is saved up to four years, whereupon the first two years are erased and replaced by two new years. This file displays the relative frequency offset (24 h average) over time and the relative aging (adjustment) over time.

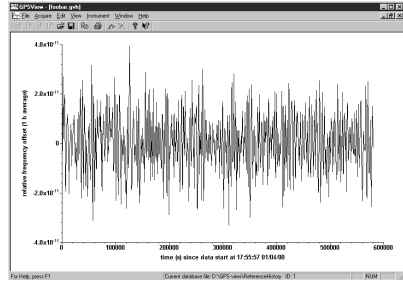
### ■ GVP: GPSView phase deviation

This graph shows the phase deviation or TIE (Time Interval Error) over time.



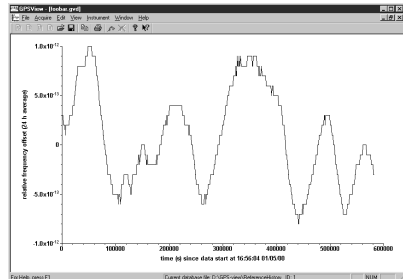
### ■ GVH: GPSView hour offset

This graph shows the relative frequency offset (1 h average) over time (s).



### ■ GPD: GPSView day offset

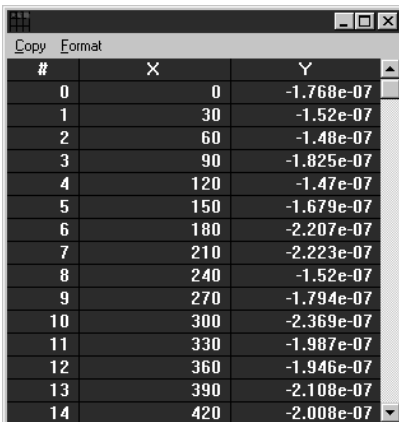
This graph shows the relative frequency offset (24 h average) over time (s).



## ■ Zooming in graphs

To zoom in a graph, hold down the left button on your mouse and drag the pointer. When you release the button, the selected area will be zoomed. You can undo the last zoom if you right-click and choose “Undo last zoom” or you can zoom to the full graph display if you choose “Zoom out full”.

If you open a file with a graph you can edit the graph by using the right button on your mouse to right-click on the graph. Then you can change plot parameters and show underlying data. If you click on the x- or y-axis you can for example change the scale. This is the same regardless of file-type. If you want to make a copy of the graph choose Edit and copy. The selection will be put on the clipboard. If you want to copy the underlying graph data to e.g. a spreadsheet program like Excel, then point at curve, right-click your mouse, select the “show underlying data”, watch the table of numeric data pop up and finally select “copy”. After that, switch to your spreadsheet program and paste the data into your spreadsheet.

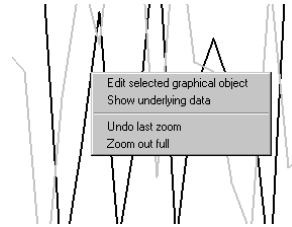


#	X	Y
0	0	-1.760e-07
1	30	-1.52e-07
2	60	-1.48e-07
3	90	-1.825e-07
4	120	-1.47e-07
5	150	-1.679e-07
6	180	-2.207e-07
7	210	-2.223e-07
8	240	-1.52e-07
9	270	-1.794e-07
10	300	-2.369e-07
11	330	-1.987e-07
12	360	-1.946e-07
13	390	-2.108e-07
14	420	-2.008e-07

**Figure 4-1** Shows underlying data

## ■ Edit graphs

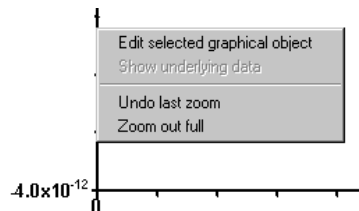
You can e.g. change the style and color of the graph lines.



**Figure 4-2** To edit the graph, click on ‘Edit selected graphical object’

## ■ Edit the y-axis

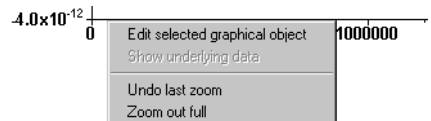
You can e.g. change the scale, markers and add horizontal marker lines.



**Figure 4-3** To edit the y-axis, click on ‘Edit selected graphical object’

## ■ Edit the x-axis

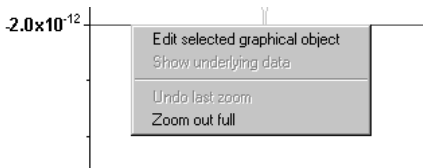
You can e.g. change the scale, markers and add vertical marker lines.



**Figure 4-4** To edit the x-axis, click on ‘Edit selected graphical object’

## ■ Editing marker lines

You can change the style and color of the marker line.



**Figure 4-5** *To edit the horizontal line, click on 'Edit selected graphical object'*

**Chapter 5**

# **Performance Check**

## General Information

**WARNING: Before turning on the instrument, ensure that it has been installed in accordance with the installation instructions outlined in Chapter 1 of the Operators Manual.**

This performance procedure is intended for incoming inspection to determine the acceptability of newly purchased instruments.

*Note: The procedure does not check every facet of the instrument. It is concerned primarily with those parts of the instrument which are essential for determining the function of the instrument.*

*Note: This GPS-controlled Frequency Reference does not need to be sent away for frequency calibration, since the instrument is continuously calibrated via the GPS-signal as long as there is a sufficient contact with the GPS-satellites.*

It is not necessary to remove the cover of the instrument to perform this procedure.

## Recommended test equipment

- DSO with 50  $\Omega$  input
- PM6681R timer/counter

## Preparations

Connect the antenna including cable to the antenna input (rear).

### Power-On test

Connect the power cord. At power-on the frequency standard performs an automatic test of the following:

- RAM
- ROM
- Measuring circuits
- GPS-receiver

If any test fails, an error message is shown.

Power up your instrument at least 30 minutes before continuing. This will allow the instrument to reach normal operating temperature and go into GPS-locked mode.

## Front Panel Controls

### Keyboard and indicator test

- 1 The display back-light shall be lit when the instrument is connected to the power outlet.
- 2
  - a) Press manual Hold-Over key. The manual Hold-Over LED shall be turned ON.
  - b) The “Locked to GPS” LED shall be turned OFF.
- 3
  - a) Press manual Hold-Over key again. The manual Hold-Over LED shall be turned OFF.
  - b) Make sure that “Locked to GPS” is turned ON. It may take up to 30 s.
- 4 Disconnect the antenna. The alarm diode shall be turned ON and “Locked to GPS” shall be turned OFF after 1s. The satellite signal shall disappear within 30s.
- 5 Reconnect the antenna. The alarm diode shall be turned OFF. The satellite signal strength indicator shall reappear and “Locked to GPS” shall be turned ON within 30s.

### Frequency offset calculation test

After 24h the first calculated frequency offset value shall be displayed. Note this first offset value may be far from the specification.

After 48h the frequency offset value should be near the specification  $2 \cdot 10^{-12}$  (910) or  $1 \cdot 10^{-12}$  (910R). If not, check if it has had continuous satellite contact and that the ambient temperature has been stable (within  $\pm 3$  degrees). Redo the test.

## Rear Panel Outputs

### 10 MHz Out

Connect a DSO with 50  $\Omega$  inputs to all “10 MHz Out” BNC-connectors, one at a time. Verify that the output signal is sinusoidal and that the voltage is at least 600 mVrms. Connect a PM 6681R counter and verify that the frequency is 10 MHz  $\pm$  0.01 Hz.

### 5 MHz Out

Connect a DSO with 50  $\Omega$  inputs to the “5 MHz Out” BNC-connector. Verify that the output signal is sinusoidal and that the voltage is at least 600 mVrms. Connect a PM 6681R counter and verify that the frequency is 5 MHz  $\pm$  0.005 Hz.

### 1 pps Out

Connect a DSO with 50  $\Omega$  inputs to the “1 pps Out” BNC-connector. Verify that the voltage is a square wave and that the low level is  $< 0.9V$  and the high level  $> 1.8V$ . Connect a PM 6681R counter and verify that the frequency is 1Hz  $\pm$  1  $\mu$ Hz.

### Option 70 (10 MHz)

Connect a DSO with 50  $\Omega$  inputs to all “10 MHz Out” BNC-connectors, one at a time. Verify that the output signal is sinusoidal and that the voltage is at least 600 mVrms. Connect a PM 6681R counter and verify that the frequency is 10 MHz  $\pm$  0.01 Hz.

### Option 71 (0.1 to 10 MHz)

Connect a DSO with 50  $\Omega$  inputs to all BNC-connectors, one at a time. Verify that the four sine wave output signals are sinusoidal and that the voltage is at least 1 Vrms. Verify that the pulse output has an amplitude of at least 3 Vpp.

The low level shall be  $\geq 0$  V but  $< 0.9$  V, and the high level shall be  $> 3$  V but  $\leq 5$  V. Connect a PM 6681R counter and verify that the frequency is  $10 \text{ MHz} \pm 0.01 \text{ Hz}$ ,  $5 \text{ MHz} \pm 0.005 \text{ Hz}$ ,  $1 \text{ MHz} \pm 0.001 \text{ Hz}$  and  $0.1 \text{ MHz} \pm 0.0001 \text{ Hz}$  respectively.

### Option 72 (2.048 MHz)

Connect a DSO with  $75 \Omega$  inputs to all BNC-connectors, one at a time. Verify that the output signal voltage is  $\pm 1.2\text{V} \pm 0.12\text{V}$ . Connect a PM 6681R counter and verify that the frequency is  $2.048 \text{ MHz} \pm 0.002 \text{ Hz}$ .

### Option 75 (Pulse Output)

Connect a DSO with  $50 \Omega$  inputs to the “Optional Pulse Out” BNC-connector. Verify that the voltage is a square wave and that the low level is  $< 0.9$  V and the high level  $> 1.8$  V. Connect a PM 6681R counter and verify that the frequency is  $1 \text{ Hz} \pm 1 \mu\text{Hz}$  (factory default setting is 1 Hz). If the frequency has been changed via the GPS-View SW, then the measured frequency should be the nominal frequency  $\pm 1$  ppm.

## Test of PC-connection

This test is only required if you intend to operate 910/910R via a PC.

- Connect the RS232-cable.
- Start and run GPS-View.
- Select the correct COM-port from the Instrument menu.
- Select “connect to instrument” and make sure that you get no error messages.
- Run the self-test under the instrument menu and make sure that you get no error messages.



Chapter 6

# Preventive Maintenance

## Calibration

*Note: Calibration is not required in this instrument. The unit is continuously calibrated to the GPS-frequency standard. The calibration data is continuously stored in internal non-volatile memory. A calibration record can be printed out at any time using GPS-View.*

## Fan Replacement

If your frequency reference is operating 24h/day, you need to replace the fan every 5th year to maintain high reliability. For part-time applications and low ambient temperatures, an extended service interval is acceptable.

Fan replacement requires no special tools (screwdrivers only). The part number of the replacement fan is 5322 361 10539.

**Chapter 7**

# **Specifications**

# Technical Specification - 910/910R

## GPS-controlled Frequency Standards

### Frequency Stability

#### Frequency stability - locked to GPS

	910R	910
Frequency offset (24h mean): Short term (Allan dev.): ( $\tau = 1000s$ )	$<1 \times 10^{-12} *$	$<2 \times 10^{-12} *$
( $\tau = 100s$ )	$<1 \times 10^{-12} *$	$<5 \times 10^{-11} *$
( $\tau = 10s$ )	$<3 \times 10^{-12} *$	$<3 \times 10^{-11} *$
( $\tau = 1s$ )	$<1 \times 10^{-11} *$	$<5 \times 10^{-12} *$

Warm up (+25°C):  
time to lock 20 min 20 min

\* at temperature 23 °C ±3 °C

#### Frequency stability - hold-over mode

	910R	910
Aging/24h:	$<2 \times 10^{-12} *$	$<3 \times 10^{-10}$
Aging/month:	$<5 \times 10^{-11}$	$<3 \times 10^{-9}$
Temp. (0°C...+50°C):	$<3 \times 10^{-10}$	$<2.5 \times 10^{-9}$
Temp. (23 °C ±3 °C):	$<2 \times 10^{-11} *$	$<4 \times 10^{-10} *$
Short term (Allan dev.):		
( $\tau = 100s$ )	$<3 \times 10^{-12}$	$<3 \times 10^{-12}$
( $\tau = 10s$ )	$<1 \times 10^{-11}$	$<5 \times 10^{-12}$
( $\tau = 1s$ )	$<3 \times 10^{-11}$	$<5 \times 10^{-12}$

Warm up (+25°C):  
10 min. to  $4 \times 10^{-10}$   $5 \times 10^{-9}$

\* typical

### Phase noise

	910R	910	
1 Hz	-80	-100	dBc/Hz (typ.)
10 Hz	-90	-120	dBc/Hz (typ.)
100 Hz	-130	-130	dBc/Hz (typ.)
1 kHz	-140	-135	dBc/Hz (typ.)
10 kHz	-140	-135	dBc/Hz (typ.)
100 kHz	-145	-135	dBc/Hz (typ.)

## Standard reference outputs

Connector type	BNC
<b>10 MHz:</b>	Sine wave, >0.5V rms in 50 Ω
<b>5 MHz:</b>	Sine wave, >0.5V rms in 50 Ω
Freq. Stability:	See frequency stability specs for 910 resp. 910R for GPS-locked respectively hold-over modes.
<b>1 pps:</b>	approx. 0 V ... 5 V in open output approx. 0 V ... 2.0 V in 50 Ω load
Duty cycle:	Approx. 20%
(GPS-locked)	
Jitter:	60 ns rms relative to UTC or
(GPS-locked)	GPS (position hold, SA on)

## Option 70 outputs

See specification for 10 MHz above.

## Option 71 outputs

Sine wave outputs:	10, 5, 1 and 0.1 MHz; >1Vrms in 50Ω
Pulse output:	0.1 MHz; $\geq 3V_{p-p}$ in 50Ω $0V \leq LO < 0.9V$ $3V < HI \leq 5V$
Freq. stability:	See frequency stability specs for 910 resp. 910R for GPS-locked resp. hold-over modes.

## Option 72 outputs

Frequency:	2.048 MHz square wave
Output level:	-1.2V to +1.2V $\pm 10\%$ in 75Ω (G.703:10)
Freq. Stability:	See frequency stability specs for 910 resp. 910R for GPS-locked resp. hold-over modes.
Jitter:	<0.01 UI

## Option 75 output

The frequency is adjustable via the included PC-program

Pulse output:	approx. 0 V ... 5 V in open output approx. 0 V ... 2.0 V in 50 Ω load
Selectable period:	$N \times 100 \text{ ns}$ ( $2 < N < 2^{28}$ )
Range:	200 ns to $\approx 27$ s ( $\approx 0.037$ Hz to 5 MHz)
Selectable pulse width:	$N \times 100 \text{ ns}$
Range:	( $1 < N < 2^{28} - 1$ ) 100 ns to $\approx 27$ s
Factory default setting:	
Frequency:	1 Hz (Period = 1s)
Duty cycle:	50% (Pulse width = 0.5 s)
Jitter:	<500 ps (rms)
Freq. stability:	See freq. stability specs for 910 resp. 910R

## Internal data storage

24h freq offset (archive data):	>2 years of data, Non-volatile memory
Adjustment data (24h):	>2 years of data, Non-volatile memory
Freq. offset (1h):	>7 days of data, volatile memory
Freq. offset (24h):	>7 days of data, volatile memory
30s phase deviation:	>2 days of data, volatile memory

## Controls

Manual hold-over:	Inhibits automatic GPS-adjustments and forces hold-over operation.
-------------------	--

## LED indicators

### *Locked to GPS*

ON:	Disciplined mode
OFF:	Hold-over mode

### *Alarm*

ON:	Alarm condition reported by instrument hardware. Explaining text in 7-segment display area. Once lit, the LED remains lit as long as the cause for alarm is present.
OFF:	Normal operation

### *Manual hold-over*

ON:	Forced hold-over mode. If GPS signal is valid, the Frequency offset is displayed. Otherwise “910 or 910R” is shown.
OFF:	Disciplined or hold-over mode depending on “Locked to GPS” status.

## Display indicators

### **7-segment area:**

24h mean frequency offset:	(If valid data exist)
Time of day:	(if GPS-contact gives valid time)
“910” or “910R”:	(if GPS-contact not sufficient)
“send”	(if instrument is transmitting data to a PC)
“test”	(if instrument is performing a self-test)

### **Alarm text (plus Alarm LED):**

<i>Antenna current:</i>	“Ant. O_Curr.” “no AntEnnA.”
<i>GPS receiver fail:</i>	“GPS fail”
<i>Freq. adjust fail:</i>	“Adj. range”
<i>Rb-ref unlocked:</i>	“Rb. unloc’d”
<i>REMOTE segment:</i>	Local Lock-out (from PC)
<i>Analog bar graph:</i>	Satellite signal strength

## GPS-receiver

Antenna connector: Type N  
 Channels: 8, parallel tracking  
 Carrier, code: L1, C/A

## Antenna (option 01)

Type: active L1  
 Operating temperature: -40°C to +70°C  
 Height: 81 mm (3.2")  
 Weight: 230 g (8 oz.)  
 Gain: >30 dB  
 Connector: TNC

## Antenna cable (option 02)

Type: RG213  
 Length: 20 m  
 Connectors: type N and TNC (male)  
 Attenuation: approx. 8 dB at 1.6 GHz  
 Cable delay: 101 ns

## PC-connection

Interface: RS232, DTE  
 Connector: 9-pin male DB9, Rx on pin2,  
 Tx on pin 3, GND on pin 5  
 Baud rate: 9600 bps  
 Data structure: 8 data bits 1 stop bit, no parity

## Fan

Temperature-controlled

## Environmental

Temperature: 0°C...+50°C (operating)  
 -40°C...+70°C (storage)  
 Vibration: 3G at 55 Hz per  
 MIL-T-28800D, Class 3,  
 Style D  
 Shock: Half-sine 40G per  
 MIL-T-28800D, Class 3,  
 Style D. Bench handling.  
 Safety: Compliant with CE:  
 EN 61010-1 + A1(1992) +  
 A2(1995)  
 EMI: Compliant with CE:  
 EN61326-1 (1997)

## Dimensions and weight

WxHxD 315 x 86 x 395 mm  
 Weight:  
 910R: 4.4 kg (net), 7.4 kg (shipping)  
 910: 3.9 kg (net), 6.9 kg (shipping)

## Power consumption

Line voltage: 90...264 V  
 Line frequency: 47..63 Hz  
 Power 910R: <75W at warm-up  
 <35W continuous operation  
 Power 910: <25W at warm-up  
 <12W continuous operation

## Ordering Information

- 910:* GPS-OCXO frequency standard  
5 x 10 MHz and 1 x 5 MHz outputs
- 910R:* GPS-Rubidium frequency standard  
5 x 10 MHz and 1 x 5 MHz outputs
- Opt. 70:* 5 extra 10 MHz outputs
- Opt. 71:* 5 extra outputs; 1x10MHz,  
1x5MHz, 1x1MHz, 1x0.1MHz  
(sine wave), 1x0.1MHz (square w.)
- Opt. 72:* 5 extra 2.048 MHz outputs
- Opt. 75:* 1 extra pulse output  
0.5 Hz...10 MHz

None of the options above is retrofittable, and options 70, 71 and 72 are mutually exclusive.

### Included accessories

Operators manual  
Calibration certificate  
GPS-View SW

### Optional accessories

- PM9622: 19" rack mount kit
- PM9627: Carrying case
- PM9627H Heavy Duty Hard Transport Case
- Option 01: GPS antenna
- Option 02: Antenna cable, 20m



**Chapter 8**

# **Appendix**

# Appendix 1, Antenna Installation

## Introduction

When installing an antenna for the GPS-controlled frequency standards 910 or 910R, some basic facts should be considered, relating to antennas and radio reception properties. The theoretical and practical discussions below will help you to make the right decisions.

Fluke supplies a GPS-antenna (option 01) and a cable assembly (option 02). Other system components that may be necessary to fulfil your requirements are readily available from vendors of GPS antenna equipment.

It is important to observe that deviations from the recommended normal solution may severely impair the performance of the overall system, unless the user has acquired the knowledge necessary to design a configuration of his own. General guidelines to good system design are given in this section of the handbook, but the user is entirely responsible for adequate performance in this case.

## Available options for antenna installation

- Option 01: GPS antenna w. Type TNC fem. Conn.
- Option 02: Antenna cable, 20 m, w. Type TNC male connector at one end and Type N male at the other.

## General guidelines to good antenna location

The general rule that applies to all installations working in or near the microwave frequency bands is that it should be possible to see the transmitter from the receiver antenna position. When dealing with terrestrial radio communication it is a great advantage to place both the transmitter antenna and the receiver antenna as high as possible. The effective line-of-sight distance increases with the square root of the height above ground.

The satellite-based GPS transmitters are, however, moving targets in the sky and require in part new rules of thumb. Moreover, you need at least see more than two satellites simultaneously, irrespective of the point of time, to get stable time readings. The receiver can have contact with eight satellites at the same time, but in practice three is enough for timing purposes, when the receiver is stationary.

It is not certain that an elevated location is an advantage, unless it is the only way to see as much of the sky as possible including the horizon in most directions. On the contrary, location on the ground could be more efficient from a technical point of view if you do not have to consider certain negative factors like the risk of physical damage and the influence of snow and ice on the antenna efficiency.

Other conditions to be taken into account are multi-path reception and interference from high-frequency signal sources nearby. All these considerations could force you to find a place for the antenna situated far from the receiver and high above ground level. We will discuss these matters presently, but the implication in brief is that new system components may have to be introduced, like low-loss coaxial cables and line amplifiers.

## Coping with interference

There are mainly two sources of interference that may affect the location of the antenna. They will be treated below. Careful inspection of the proposed site can often reveal the most apparent ones.

### ■ Multi-path reception

Reflections from metal surfaces nearby can cause the wanted signal to enter the antenna from two or more directions with more or less equal strength. Then the phase relationship determines whether the resulting signal will be amplified or attenuated. At worst it can vanish. Since the GPS satellites are not stationary the conditions can be compared to the fading problem on the shortwave bands. The directive sensitivity of the antenna resembles a hemisphere with its base plane going horizontally through the antenna, provided it is mounted vertically on top of a mast. Therefore you must avoid locations near reflective surfaces beside or above the antenna.

### ■ High-frequency interference

Strong signal sources in the vicinity, like cellular radio transmitters, can cause interference or saturation in the antenna amplifier. Even though the systems do not operate at the same frequency the problem has still been observed from time to time and must not be neglected.

## Standard configuration

The majority of installations can do with the standard configuration, consisting of one GPS antenna, one 20-m antenna cable, and the GPS-controlled frequency reference itself (910 or 910R). In many cases, the distance between the antenna and the receiver could be less than

20 m. Normally excessive cable length is easy to tolerate. Do not shorten the cable, unless absolutely necessary, because the high antenna gain of 36 dB requires the signal to be attenuated by at least 6 dB before entering the receiver.

## Deviations from the standard configuration

### ■ General principles

The system configurations that cannot directly use the standard options provided by Pendulum can be listed in different ways. One simple method of classification used here is to isolate a number of cases and treat them separately. If several steps have to be taken to arrive at a solution that satisfies all requirements, then it should be possible to derive the individual components from the list by means of combination. The method is illustrated by some practical examples later in this chapter.

The most important design parameter is the cable loss at the receiving frequency 1.575 GHz. There are a number of cable types to choose from, but for the sake of simplicity one normal and one low-loss type have been selected:

Cable type	Attenuation per 100 m
Standard (RG-213)	Approx 40 dB
Low loss (LMR400)	Approx 17 dB

The common laboratory cable RG-58 has been excluded, as its losses only allow relatively short distances between antenna and receiver. It is more flexible, however, and might be utilized with care, if you are fully aware of its characteristics.

Remaining parameters to consider are:

Antenna gain:	+36 dB (option 01)
Guard band:	±3 dB
Total external gain at the receiver input:	+11dB ... +33 dB

When designing your own antenna installation, you must check that the gain at the receiver input is within limits according to the above table. That is, you must check that:

+ antenna gain	+ antenna gain
- total attenuation	- total attenuation
+ total amplification	+ total amplification
- guard band	+ guard band
<hr/>	
≥ +11 dB	≤ +33 dB

## ■ Case classification

*The distance between antenna and receiver exceeds 20 m but not 55 m*

- Use a coaxial cable of type RG-213 or cascade two or three pieces of option 02 by means of adapters. Note that normal adapters are not weatherproof and should be placed indoors. Normally there is little to gain by using a low-loss cable in this case, but see example #1 below. RG-213 is more inexpensive and flexible.

*The distance between antenna and receiver exceeds 55 m but not 130 m*

- Use a low-loss coaxial cable of type LMR 400 or equivalent.

*The distance between antenna and receiver exceeds 130 m but not 245 m*

- Use a line amplifier with a nominal gain of 20 dB plus low-loss coaxial cable of type LMR 400 or equivalent. The ampli-

fier must accept a fixed +5 V supply voltage fed through the central conductor of the coaxial cable. The maximum input power for linear operation should be at least –6 dBm, and the noise figure should be less than 2 dB.

*The distance between antenna and receiver is in the range 245-360 m*

- Use two cascaded line amplifiers (20 dB each) plus low-loss coaxial cable of type LMR 400 or equivalent.

*Better protection against lightning strikes needed*

Lightning protection is a wide field and cannot be covered more than superficially in this manual. If the building is situated in a risk area, a general survey of the overall house protection might be needed. Especially lightning rods near the GPS antenna mounting mast should be inspected. Make sure that the antenna is far from being the highest point and, as a precaution, ground the mounting mast as if it were part of the ordinary lightning rod system.

There are several conditions that may call for a separate lightning arrester to support the built-in antenna protection.

- The cable length outside the building exceeds 15 m.
- An elevated antenna position with no efficient lightning rods nearby.
- Areas where the frequency of thunderstorms is significantly higher than normal.
- Extra safety wanted due to sensitive and/or expensive equipment being connected to the GPS timebase system.

A lightning arrester should be mounted inside the building close to the cable entry point.

### Harsh environmental conditions

Snow and ice on the surface of the antenna can significantly reduce the effective sensitivity by as much as 6 dB. You could, for instance, utilize an electrically heated radome to house the antenna unit, to avoid the attenuation effects of this environmental influence.

Other weather conditions having negative influence on the system sensitivity are heavy rain and fog. The attenuation effects are normally covered by the 3 dB guard band, used in the calculations.

## ■ Four practical examples

### Example 1

#### Requirements

Cable length:	52 m (5 m indoors)
Lightning arrester:	yes
Climatic conditions:	normal

#### Solution

The cable length indoors, i.e. after the lightning arrester, must be at least 8 m, otherwise the protective function may not be guaranteed. So, you have to make the cable 3 m longer indoors. The effective cable length will be 55 m instead. This is the upper limit for the standard RG-213 cable, under normal climatic conditions.

Calculation of total gain at the receiver input, using a RG-213 cable with an attenuation of 0.40 dB/m (40 dB per 100 m), under *normal environmental conditions*:

Antenna gain:	+36 dB
Cable loss:	-22 dB (-55 * 0.40)
Guard band:	-3 dB
Total gain:	+11 dB (36-22-3)

This gain figure is exactly at the lower permissible level at the receiver input.

### Example 2

#### Requirements

Cable length:	55 m (50 m indoors)
Lightning arrester:	no
Climatic conditions:	snow and ice

#### Solution

The cable length 55 m is the upper limit for the standard RG-213 cable, under *normal environmental conditions*.

But snow and ice on the surface of the antenna can attenuate the signal by 6 dB.

Let us calculate total gain at the receiver input for a RG-213 cable, taking the snow and ice factor into consideration:

Antenna gain:	+36 dB
Harsh weather:	-6 dB
Cable loss:	-22 dB (-55 * 0.40)
Guard band:	-3 dB
Total gain:	+5 dB (36-6-22-3)

The latter figure should be in the range 11 – 33 dB, so the additional 6 dB loss due to extreme weather conditions requires the use of a low-loss cable, e.g. LMR400, having an attenuation of 0.17 dB/m (17 dB per 100m). This gives the following total gain:

Antenna gain:	+36 dB
Harsh weather:	- 6 dB
Cable loss:	-9 dB (-55 * 0.17)
Guard band:	-3 dB
Total gain:	+18 dB (36-6-9-3)

This gain value is well within the acceptable range.

### Example 3

#### Requirements

Cable length:	130 m (120 m indoors)
Lightning arrester:	no
Climatic conditions:	normal

#### Solution

As this cable length suggests the use of a line amplifier, let us check that the total gain at the receiver input does not exceed the maximum value allowed, +33 dB.

Antenna gain:	+36 dB
Amplifier gain:	+20 dB
Cable loss:	-22 dB (-130 * 0.17)
Guard band:	+3 dB
Total gain:	+37 dB (36+20-22+3)

This calculation means that if the weather is fine and the antenna gain is at its positive tolerance level, then the signal should be attenuated by at least 4 dB to avoid overloading the receiver input. An external 6-dB attenuator directly on the input connector takes care of the problem.

As the cable length outside the building is not more than 10 m (limit 15 m) a lightning arrester is not compulsory.

### Example 4

#### Requirements

Cable length:	325 m (120 m indoors)
Lightning arrester:	yes
Climatic conditions:	snow and ice

#### Solution

This is a typical two-amplifier configuration. A worst-case calculation using a LMR400 cable gives:

Antenna gain :	+36 dB
Amplifier gain:	+40 dB (+20 +20)
Cable loss:	-55 dB (-325 * 0.17)
Guard band:	-3 dB
Harsh weather:	-6 dB
Total gain:	+12 dB (36+40-55-6-3)

In other words, 325 m is close to the upper limit of the cable length, if the weather conditions are much worse than average. Otherwise you could expect another 35 m. It is not recommended to cascade more than two amplifiers to obtain even greater cable lengths due to the risk of saturation or other non-linear behavior. If need be, use a single, tuned amplifier designed for the calculated total gain.

Since the cable length outside the building is substantial, it is strongly recommended to use a lightning arrester, even if the location of the antenna is well protected from direct lightning strikes. Induced high voltages must not be neglected. Sensitive equipment without over-voltage protection can easily be destroyed in this way.

## Auxiliary components on the market

This is a summary of system components that may be necessary to complete an installation tailored to your individual needs. These components are supplied by a large number of manufacturers worldwide.

If any of these parts have to be mounted outdoors, make sure they have an adequate temperature range. They must also be specified as weatherproof. Otherwise they have to be housed in boxes that can withstand the local climatic conditions.

### ■ Coaxial cables

– Used for transferring the HF signal from the antenna unit to the receiver, sometimes via other system components. Active devices like line amplifiers and the antenna unit itself are also supplied with DC power through this cable.

Only high-quality 50  $\Omega$  cables should be used, preferably RG-213 for normal use and LMR 400 when long distances have to be bridged.

### ■ Coaxial adapters

– Used for interconnecting system components employing different connector standards.

All major connector manufacturers also supply a large variety of adapters. Note that most adapters require additional protection if mounted outdoors or in places with high humidity.

### ■ Line amplifiers

– Used for compensation of cable losses.

Normally wide-band amplifiers with moderate gain are used, but in special cases tuned high-gain amplifiers may be more suitable, for

example when very long cable lengths are necessary.

Maximum two amplifiers can be inserted in the signal path before the loss seen from the antenna exceeds 6 dB. The distance between the antenna and the first line amplifier should be as short as possible and not more than about 35 m, giving a loss of  $35 \times 0,17 \approx 6$  dB, if a low-loss cable is used.

If this basic rule is followed, the noise figure of the total system is almost entirely set by the first amplifier stage, in this case the active antenna itself. The noise of the line amplifiers can then normally be neglected.

### ■ Power splitters

– Used for dividing the signal from the antenna between two or more timing receivers.

There are both passive and active splitters, the latter often being line amplifiers with more than one output. A passive power splitter has a fixed insertion loss, for instance 6 dB with the resistive type, whereas the active types often have no loss or even a low gain.

### ■ Attenuators

– Used for adapting the signal level at the input of the receiver input.

There are both fixed and variable attenuators available.

### ■ Lightning arresters

– Passive devices for diverting over-voltages to ground, thus protecting sensitive equipment connected to the output of the lightning arrester.

Such a device should be mounted inside the building close to the cable entry point. It requires a good ground connection through a 4 AWG copper wire or a braided copper strap

with the corresponding cross-section area. It must be a minimum cable length of 8 m after the lightning arrester to guarantee its proper function.

Remember that the antenna and the lightning arrester primarily protect the equipment later in the chain. They may be destroyed themselves. Consequently it is recommended to keep these components as replacement parts, if minimum downtime is important.

### ■ **Mounting masts**

- Used for securing the antenna unit. At the same time the coaxial connectors are protected from both mechanical and environmental influence.

Pipes with 1-14 UNS thread, suitable as masts, can often be obtained from retailers selling boat gear.



## Appendix 2, Device Error Messages

If the frequency standard detects an internal error or an invalid setting, it shows an error message on the display. This appendix lists all possible error messages.

### Messages due to operation errors :

#### *Ant. O. Curr*

**Antenna current:** The antenna current is too high ("over-current"). Check for short-circuits or connect the antenna via a longer cable.

#### *no Antenna*

**Antenna current:** No antenna is recognized ("under-current"). Check cable and connectors. Try to disconnect - reconnect the frequency standard.

Note: some antennas may draw very low current, which may be interpreted by the frequency standard as "no antenna". If so, disable the "no antenna" alarm via GPS-View or via programming code:

```
“:SYST:ALAR:ENAB:NOAN”
```

#### *GPS FAIL*

**GPS receiver fail:** Internal error in the GPS receiver. Try to disconnect - reconnect the frequency standard.

#### *Adj. range*

**Frequency adjust fail:** Can not control the local oscillator any longer. Try to disconnect - reconnect the frequency standard.

#### *Rb. unloc d*

**Rb-ref unlocked:** Rubidium Timebase is unlocked 5 minutes after power-on.

## Appendix 3, Command Reference

Remote control and programming reference for Fluke GPS-Controlled Frequency Standards 910/910R.

### First time installation of the 910/910R

- Connect the 910/910R to the RS232 port of the computer using a suitable serial cable (see page 2-8).
- Turn on the computer and the frequency standard.
- Make sure that the communication settings for the RS232 port of the computer and the frequency standard match.

The fixed settings of the frequency standard are as follows:

9600 baud, No parity, 8 data bits, 1 stop bit

You can modify the computer RS232 port settings to match the above frequency standard settings with the following DOS command:  
MODE COM1:9600,N,8,1

This command assumes that COM1 is the RS232 port used on the computer. Replace COM1 in the above command by COM2, COM3, or COM4 if one of these ports is used.

### Introduction to programming

#### ■ Basic Programming Information

You can control the frequency standard from the computer with simple communication facilities, such as QuickBASIC and QBASIC (pro-

gramming languages from Microsoft Corporation).

#### ■ Example Language

Small examples are given at various places in the text. These examples are not in BASIC or C, nor are they written for any specific controller. They only contain the characters you should send to the frequency standard and the responses that you should read with the controller.

Example:

SEND-> FETCH?

SEND-> means that you should write your program so that it will output this string to the serial port.

READ<- 1.234567890E-6

READ<- means that you should write your program so that it will input this string from the serial port.

#### ■ SCPI Programming Language

SCPI (Standard Commands for Programmable Instruments) is a standardized set of commands used to remotely control programmable test and measurement instruments.

#### *Reason for SCPI*

For each instrument function, SCPI defines a specific command set. The advantage of SCPI is that programming an instrument is only function dependent and no longer instrument dependent. Several different types of instruments, for example an oscilloscope, a counter and a multimeter, can carry out the same function, such as frequency measurement. If these instruments are SCPI compatible, you can use the same commands to measure the frequency on all three instruments, although there may be differences in accuracy, resolution, speed, etc. The Frequency Standard firmware is compliant with the SCPI. It defines the syntax and semantics that the controller must use to communicate

with the instrument. This chapter is a short overview of SCPI and shows how SCPI is used in Frequency Standards. SCPI is based on IEEE-488.2 to which it owes much of its structure and syntax. SCPI can, however, be used with any of the standard interfaces, such as RS-232. This programming reference assumes that the user has good knowledge of SCPI syntax. Such knowledge can be gained by studying commercially available books about SCPI programming. Useful information can be found in the Fluke PM6680/81/85 Timer/Counter/Analyzers Programming Manual;  
Order No. **4822 872 20081**

### ■ Short summary of Syntax

A typical command string may look like this:  
:GPS:SATellite:TRACking:COUNT?<nl>

: (colon)

A leading colon shows that the following command starts from the root level of the command tree. A colon in a string separates different parts of a compound header (like :GPS:SATellite:TRACking)

(space)

Separates header from data.

" (quote)

Single or double quote indicates string data.

;(semicolon)

Separates several program messages in a string.

? (question)

Indicates that a response is requested.

() (Parenthesis)

Indicates Expression data.

<nl> (new line) or <cr> (carriage return)

Ends a message.

### ■ Typographic conventions in this text

UPPERCASE

Like in PERiod PER is the short form and period is the long form. The instrument will act exactly in the same way whichever form you

use.

<...>

An expression between these brackets is a code, such as <nl> (new line) that can not be expressed in a printable character, or it is a parameter that is further specified. Do not insert the brackets in the command!

[...]

The item between these brackets is optional. This means that you may omit it. Do not insert the brackets in the command!

|

This is a separator between selectable items. This means that you must choose only one of the items (exclusive or). Example: 1|2 means you can type either 1 or 2.

### ■ Overview of command subsystems

FETCh?

Requests the instrument to return a measuring result.

TRACe?

Requests the instrument to return an array of measured values.

SOURce

Selects output signal period and pulse width.

STATus

This subsystem can be used to get information about what is happening in the instrument at the moment.

SYNChronization

This subsystem can be used to view GPS-synchronization.

SYSTem

This subsystem controls some system parameters.

GPS

This subsystem controls the GPS-receiver and retrieves status info.

TEST

This subsystem tests the hardware and software of the frequency reference and reports errors.

PTIMe

This is for compatibility with other references.

OUTPut

Show optional pulse output status.

### ■ Program Sequence

A typical program sequence consists of the following user actions:

1. Set the communication parameters for the RS232 port of the computer to match the frequency standard settings.
2. Output a command or query, or a list of commands and queries, to the frequency standard. In some situations it is needed to synchronize the execution of the programming sequence with the actions in the controller. This is used by adding the \*OPC? at the end of the command sequence. This command will output a 1 to the controller when all pending commands have been executed.
3. If a query was output to the frequency standard, input its response.
4. The sequence of points 2, and 3 may be repeated for different commands or queries.
5. Close the communication channel.

### ■ Order of Execution

All commands in frequency standards are sequential, i.e., they are executed in the same order as they are received. Commands, separated by semicolons, on a single line are executed one by one without interrupting each other.

---

## Fluke 910 and 910R remote control command reference guide

---

### *Fetch data*

*:FETCh?*

Purpose: The fetch query retrieves one measuring result from the measurement result buffer of the frequency standard. If no parameter is entered, then the last TIE-value is fetched. TIE (Time Interval Error) or SIGNal (received satellite signal strength) measurement results can be selected.

Query Syntax:

```
:FETCh[:SCALar]?<nl>
:FETCh[:SCALar][:TIE | SIGNal]?<nl>
```

Response Syntax:

```
<numerical value><nl>
```

Example:

```
SEND-> :FETC?<nl>
READ<- 2.345600000000E-008<nl>
```

---

### *Fetch data array - overview*

*:TRACe?*

Purpose: The TRACe query retrieves a stored array of TIE-measurements, frequency offset values based on these TIE-measurements.

Query Syntax:

```
:TRACe[:TIE | DATA]? CH1<nl> (get TIE-values array)
:TRACE[:TIE]:DEV1H | DEV24H | ARC24H? CH1<nl> (get frequency offset values array)
```

The TIE-values occupy max. 8166 values (>2 days of data). The RAM-stored frequency offset values (DEV1H, DEV24H) occupy max. 720 values (>7 days of data). The archived 24h frequency offset values occupy approximately 1000 values (>2 years of data, at normal usage). The TIE values array is updated once per 30s. The RAM-stored frequency offset values array (DEV1H, DEV24H) is updated every 15 minutes and the archived (non-volatile storage) 24h offset values array (ARC24H) is updated once per 24h.

Example:

```
SEND-> :TRACe? CH1<nl>
```

This example shows a request for TIE-values array data.

Response Syntax:

```
<header><binary block><nl>
```

Binary block:

A binary block has the format: “#ds<binary data>” (without the quotes).

# = Mandatory first character of binary block

## Appendix

---

d = the first character after the #, tells the number of digits in the block size number  
s = the block size, that is s bytes of binary data will follow. The value of s contains d characters.

Example:

```
#217actually a string<nl>
```

In this example, the block size number has 2 digits, the block size is 17 and the following 17 characters is the data (which in this example is no binary number, but a string for the sake of visibility. Binary data are most commonly not printable)

An empty block is written "#10".

Header:

A header consists of several parameters, both strings and numerical values in ASCII format. Strings are written within double quotes, i.e. "Hz", Strings may be empty, i.e. "".

---

*Fetch data array TIE*

*:TRACe:TIE?*

Query Syntax:

```
:TRACe[:TIE | DATA]? CH1<nl> (get TIE-values array)
```

Response Syntax:

```
<Channel>,<Y-unit>,<X-unit>,<Y-zero>,<X-zero>,<Y-resolution>,<X-resolution>,<Reserved>,<Samples>,<max-Y>,<min-Y>,<max-Y-X>,<min-Y-X>,<binary block><nl>
```

<Channel> is a string and is either "Channel 1" or "No trace acquired", in the latter case the rest of the response message does not contain valid data (but is present).

<Y-unit> and <X-unit> are strings, "s" for both Y (TIE) and X (timescale).

<Y-zero> and <X-zero> are numerical values (ASCII format) indicating the start value for the X- and Y-values.

<Y-resolution> and <X-resolution> are numerical values (ASCII format) indicating the unit value of the data in the binary block, e.g. 1E-10 for TIE, saying that the data in the binary block should be multiplied with 100 ps (TIE) to obtain the actual value.

<Samples> is a numerical value (ASCII format) that equals the number of samples for TIE in the following binary block.

<Max-Y>, <min-Y>, <max-Y-X> and <min-Y-X> defines a boundary box for the trace data

The binary data contains TIE values together with the corresponding timestamp for these values. Each value occupies 4 bytes of binary data in the 32-bit signed integer format, in s.c. "little endian format" (negative numbers as 2-complement) That means that the binary data block size is: 2 \* <Samples> \* 4 bytes stored in the order Y1 X1 Y2 X2... etc.

The absolute value (in seconds) of TIE corresponding to the binary value  $Y_i$  is calculated as:  $Y_i * Y\text{-resolution} + Y\text{-zero}$ .

The absolute value (in seconds) since 00:00:00 on January 1, 1980 of the timestamp corresponding to the binary value  $X_i$  is calculated as:  $X_i * X\text{-resolution} + X\text{-zero}$ . The relative timestamp value in seconds, since first measurement is calculated as:  $X_i * X\text{-resolution}$  (first measurement has timestamp value zero).

---

*Fetch data array 1h or 24h freq. offset (RAM)* :TRACe:DEV1H?  
:TRACe:DEV24H?

Query syntax

:TRACE:[DEV1H|DEV24H]? CH1<nl>

Response Syntax:

<Channel>,<Y-unit>,<X-unit>,<Y-zero>,<X-zero>,<Y-resolution>,<X-resolution>,<Reserved>,<Samples>,<binary block><nl>

<Channel> is a string and is either "Channel 1" or "No trace acquired", in the latter case the rest of the response message does not contain valid data (but is present).

<Y-unit> and <X-unit> are strings; "" (empty string) for DEV1H and DEV24H, "s" for X (i.e. timestamps).

<Y-zero> and <X-zero> are numerical values (ASCII format) indicating the zero level value for the X- and Y-values.

<Y-resolution> and <X-resolution> are numerical values (ASCII format) indicating the unit value of the data in the binary block, e.g. 1E-13 for Y (DEV1H or DEV24H), saying that the data in the binary block should be multiplied with  $1 * 10^{-13}$  (relative frequency deviation).

<Samples> is a numerical value (ASCII format) that equals the number of samples for DEV1H or DEV24H in the following binary block.

The binary data contains DEV1H or DEV24H values together with the corresponding timestamp for these values. Each value occupies 2 bytes of binary data in the 16-bit signed integer format, in s.c. "little endian format" (negative numbers as 2-complement). That means that the binary data block size is:  $2 * \text{<Samples>} * 2$  bytes stored in the order X1 Y1 X2 Y2... etc.

Note: The order between X,Y pairs (X before Y) in the response to the :TRAC:DEV1H? or :TRAC:DEV24H? query, is the opposite compared to the response to the :TRAC:TIE? queries (Y before X).

The value (expressed as a relative deviation to nominal frequency) of DEV1H or DEV24H corresponding to the binary value  $Y_i$  is calculated as:  $Y_i * Y\text{-resolution} + Y\text{-zero}$ .

Note: It is possible for the deviation to overflow the range used. In this case the value is truncated to the maximum or minimum depending on the sign of the value.

## Appendix

---

The absolute value (in seconds) since 00:00:00 on January 1, 1980 of the timestamp corresponding to the binary value  $X_i$  is calculated as:  $X_i * X\text{-resolution} + X\text{-zero}$ .

---

*Fetch data array 24h freq. offset (non-volatile archive) :TRACe:ARC24H?*

Query syntax

:TRACE:ARC24H? CH1<nl>

Response Syntax:

<Channel>,<Y1-unit>,<Y2-unit>,<X-unit>,#224<binary data>,#224<binary data>,...,#10<nl>

<Channel> is a string and is either "Channel 1" or "No trace acquired", in the latter case the rest of the response message does not contain valid data (but is present).

<Y1-unit> is the relative frequency offset unit "" (dimensionless, i.e. empty string)

<Y2-unit> is the timebase adjustment data unit "" (dimensionless, i.e. empty string)

<X-unit> is the time scale unit "s" for X (i.e. real-time timestamps).

The binary data contains timestamps (X), frequency offset (Y1) and timebase oscillator adjustment (Y2) values. Each value occupies 8 bytes of binary data in the 64-bit IEEE floating point numbers stored in s.c. "little endian format". Each binary block contains one X, one Y1 and one Y2 value, that is totally  $3*8=24$  bytes of data. The complete binary block has the format: "#224<X><Y1><Y2>". The blocks are transferred, one by one, from the 910/910R until the last data triplet in the non-volatile storage array is reached. Then the termination block #10 is sent.

Note: unlike the other :TRAC? Commands; there is no sample parameter in the header, and there is no a priori block size that could be read from the first characters of the binary block. Instead multiple binary blocks, containing one data triplet each, are transferred and the receiving controller must check for the termination block (#10)

<X> is the absolute timestamp value (in seconds) since 00:00:00 on January 1, 1980 (ignoring leap seconds)

<Y1> is the relative frequency deviation from nominal, measured as an average over 24h

<Y2> is the oscillator adjustment value expressed as relative frequency offset from midrange setting



---

*Select output signal**:SOUR:PULSe*  
*(only option 75)*

Purpose: The source command selects period and pulse width of the programmable pulse output.

Note: The resolution of period and pulse width is 100ns. Pulse width min 100 ns, max  $(2^{28} - 1) * 100$  ns. Period min 200 ns, max  $2^{28} * 100$  ns. The value setting is stored in non-volatile memory.

Command Syntax:

```
:SOURce:PULSe:PERiod | WIDTh <numeric data><nl>
```

Example:

```
SEND-> :SOUR:PULSe:PER 1E-6;;:SOUR:PULS:WIDT 5E-7<nl>
```

This example turns on a 1 MHz square wave pulse signal on the output

Query Syntax:

```
:SOURce:PULSe:PERiod | WIDTh?<nl>
```

Response Syntax:

```
<numerical value><nl>
```

Example:

```
SEND-> :SOUR:PULS:PER?<nl>
```

```
READ<- 0,0000040<nl>
```

In this example the instrument is set up for 250 kHz pulse frequency (period = 4  $\mu$ s).

---

*Output signal enabled?**:OUTP*

Purpose: The output command shows if the pulse output option (option 75) is installed or not.

Note: Select signal frequency and duty cycle with :SOURce command

Query Syntax:

```
:OUTPut[:STATe]?<nl>
```

Response Syntax:

```
<1|0><nl>
```

Example:

```
SEND-> :OUTP?<nl>
```

```
READ<- 1<nl>
```

In this example the output is available (option 75 is installed).

### Read status

:STAT:OPER?

Purpose: Read status operation event register. Reading the Operation Event Register clears the register.

Query Syntax:

```
:STATus:OPERation[:EVENT]?<nl>
```

Returned Format:

```
<Decimal data><nl>
```

```
<dec.data> = the sum of all bits that are true.<nl>
```

### Event Register

Bit 14: Rubidium oscillator un-locked	(Value:16384)
Bit 13: Out of adjustment range	(Value:8192)
Bit 12: No antenna	(Value:4096)
Bit 11: Antenna over-current	(Value:2048)
Bit 10: GPS failure	(Value:1024)
Bit 9: Measurement time out	(Value:512)
Bit 8: Measurement stopped	(Value:256)
Bit 5: Waiting for trigger and/or external alarming	(Value:32)
Bit 4: Measurement started	(Value:16)
Other bits not used	

Example:

```
SEND-> :STAT:OPER?<nl>
```

```
READ<- 256<nl>
```

In this example, status indicate that the measurement is stopped.

---

*Read status**:STAT:OPER:COND?*

Purpose: Read status operation condition register.

Query Syntax:

*:STATus:OPERation:CONDition?<nl>*

Returned Format:

*<Decimal data><nl>**<dec.data>* = the sum of all bits that are true.<nl>

## Condition Register

Bit 14: Rubidium oscillator un-locked	(Value:16384)
Bit 13: Out of adjustment range	(Value:8192)
Bit 12: No antenna	(Value:4096)
Bit 11: Antenna over-current	(Value:2048)
Bit 10: GPS failure	(Value:1024)
Bit 9: Measurement time out	(Value:512)
Bit 8: Measurement stopped	(Value:256)
Bit 5: Waiting for trigger and/or external alarming	(Value:32)
Bit 4: Measurement started	(Value:16)
Other bits not used	

Example:

*SEND-> :STAT:OPER:COND?<nl>**READ<- 4096<nl>*

In this example, status indicate that the antenna is disconnected.

### ■ SYSTEM subsystem

---

#### *Interface settings*

:SYST:ERR?

Purpose: Error code and explanation of bus commands.

Query Syntax:

```
:SYSTem:ERRor?<nl>
```

Example:

```
SEND-> :SYST:ERR? <nl>
```

Returned format:

```
<numerical value>,<string><nl>
```

Example:

```
SEND-> SYSTem:ERR?<nl>
```

```
READ<- 0, "No error"><nl>
```

---

#### *Lock keyboard*

:SYST:KLOC

Purpose: Locks the keyboard to prevent user intervention when the frequency standard is under program control. Locked state is indicated by REMOTE on the display.

Command Syntax:

```
:SYSTem:KLOCK <Boolean><nl>
```

Parameters:

```
<Boolean> Both ON|OFF and 1|0 can be used.<nl>
```

Example:

```
SEND-> :SYST:KLOC ON<nl> Locks keyboard<nl>
```

```
SEND-> :SYST:KLOC OFF<nl> Unlocks keyboard<nl>
```

Query Syntax:

```
:SYSTem:KLOCK?<nl>
```

Response format:

```
1|0<nl> where 1 is locked and 0 is unlocked.
```

Example:

```
SEND-> :SYST:KLOC?<nl>
```

```
READ<- 0<nl>
```

In this example the keyboard is unlocked

## ■ TEST subsystem

---

### Select self test

:TEST:SEL

Purpose: Selects which internal self-tests to run when the \*TST command is received.

Command Syntax:

```
:TEST:SELect RAM|ROM|NONVolatile|GPS|ALL<nl>
```

Note: The default is ALL

Example:

```
SEND-> :TEST:SEL ROM<nl>    Selects ROM test.
SEND-> *TST?<nl>           Makes the selected test
READ<- 0<nl>              Result from test, 0=no error
```

Query Syntax:

```
:TEST:SELect?<nl>
```

Response:

```
<text>
SEND-> :TEST:SEL?<nl>    Asks what test is selected
READ<- ROM<nl>         The instrument is set up for ROM test
```

## ■ IEEE 488.2 defined \* commands (standard commands)

---

### Identification query

\*IDN?

Purpose: The identification query reads out the manufacturer, model, serial number and firmware level, as an ASCII response data element. The query must be the last query in a program message.

Query Syntax:

```
*IDN? <nl>
```

Response syntax:

```
<Manufacturer>,<Model>,<Serial Number>,<Firmware Level><nl>
```

Example:

```
SEND-> *IDN?<nl>
READ<- Fluke, 910, 123456, V1.01 <nl>
```

### *Protected User Data*

*\*PUD?*

Purpose: This is a data area in which the user may write any data up to 64 characters. The data can always be read, but you can only write data after unprotecting the data area. A typical use would be to hold owner/user name, usage time, inventory control numbers, etc.

Query Syntax:

```
*PUD?<nl>
```

Response syntax:

```
<Arbitrary block response data><nl>
```

where: <arbitrary block program data> is the data last programmed with \*PUD.

Example:

```
SEND-> :SYST:UNPR; *PUD #240ACME Inc. Bobby Brown, inventoryNo.1234 <nl>
```

# means that <arbitrary block program data> will follow. 2 means that the two following digits will specify

the length of the data block. 40 is the number of characters in this example.

```
SEND-> *PUD?<nl>
```

```
READ<- #240ACME Inc. Bobby Brown, inventory No.1234<nl>
```

Note: :SYST:UNPR means unprotect and enables writing of protected user data. This command is only used here and not further explained.

## ■ Internal operations commands

---

### *Operation Complete Query*

*\*OPC?*

Purpose: This command is used to synchronize the execution of the programming sequence with the actions in the controller. This is used by adding the \*OPC? at the end of the command sequence. The operation complete query places an ASCII character 1 in the devices output queue when all pending selected device operations have been finished.

This command causes the device to generate the operation complete message in the Standard Event Status Register when all pending selected device operations have been finished.

Response syntax:

```
1 <nl>
```

Example:

```
SEND-> SYST:TZONe 1,0; *OPC?<nl>
```

```
READ<- 1 <nl>
```

```
SEND-> SYST:TIME?<nl>
```

```
READ<- 12,17,23 <nl>
```

---

**Reset****\*RST**

Purpose: Resets the frequency standard to the same state as after a power-down-power-up sequence.

Command Syntax:

\*RST<nl>

Example:

SEND-> \*RST<nl>

---

**Self test****\*TST?**

Purpose: The self-test query causes an internal self-test and generates a response indicating whether or not the device completed the selftest without any detected errors. Use :TEST:SEL to select which test to run.

Query Syntax:

\*TST?<nl>

Example:

SEND-> \*TST?<nl>

Returned Format:

<Integer><nl>

where: <Integer> = a number indicating errors according to the table below.

<u>&lt;Integer&gt;</u>	<u>Error</u>
0	No error
4	RAM Failure
8	ROM Failure
16	Non Volatile memory error
32	GPS Failure

## ■ Status and Event commands

---

**Status byte query****\*STB?**

Purpose: Status Byte Query Reads out the value of the Status Byte.

Query Syntax:

\*STB?<nl>

Returned Format:

<Integer><nl> = the sum (between 0 and 255) of all bits that are true. See table below:

## Appendix

---

<u>&lt;Integer&gt;</u>	<u>Status</u>
128 (Bit 7)	Measurement started
64 (Bit 6)	Master Summary Status
32 (Bit 5)	A bit in the standard event status register is set
16 (Bit 4)	Message available ( always set )
8 (Bit 3)	Not used
4 (Bit 2)	Error available
2 (Bit 1)	Not used
1 (Bit 0)	Not used

Example:

```
SEND-> *STB?<nl>
READ<- 16<nl>
```

In this example, a message is available

---

### *Event status register*

*\*ESR?*

Purpose: Reads out the contents of the standard event status register. Reading the Standard Event Status Register clears the register.

Query Syntax:

```
*ESR?<nl>
```

Returned Format:

```
<dec.data> = the sum (between 0 and 255) of all bits that are true.<nl>
```

<u>&lt;Integer&gt;</u>	<u>Status</u>
128 (Bit 7)	Not used
64 (Bit 6)	Not used
32 (Bit 5)	A command error has occurred
16 (Bit 4)	An execution error has occurred
8 (Bit 3)	A device dependent error has occurred
4 (Bit 2)	A query error has occurred
2 (Bit 1)	Not used
1 (Bit 0)	Operation complete

Example:

```
SEND-> *ESR?:<nl>
READ<- 4<nl>
```

In this example, a query error has occurred.



---

*Clear Status command**\*CLS?*

Purpose: The \*CLS command clears the status data structures by clearing all event registers and the error queue. It does not clear enable registers. It clears any pending \*WAI, \*OPC and \*OPC?

Command Syntax:

\*CLS<n1>

Example:

SEND-> \*CLS<n1>

---

*Standard event status enable**\*ESE**\*ESE?*

Purpose: Sets and Reads out the contents of the standard event status enable register.

Command Syntax:

\*ESE<dec.data><n1>

<dec.data> = the sum (between 0 and 255) of all bits that are true.

<u>&lt;Integer&gt;</u>	<u>Status</u>
128 (Bit 7)	Not used
64 (Bit 6)	Not used
32 (Bit 5)	Command error event enable
16 (Bit 4)	Execution error event enable
8 (Bit 3)	Device dependent error event enable
4 (Bit 2)	Query error event enable
2 (Bit 1)	Not used
1 (Bit 0)	Operation complete event enable

Example:

SEND-> \*ESE 33<n1>

In this example, the Command Error (bit 5) and Operation Complete (bit 0) enable bits are set.

Query Syntax:

\*ESE?<n1>

Returned Format:

<dec.data> = the sum (between 0 and 255) of all bits that are true.<n1>

Example:

SEND-> \*ESE?<n1>

READ<- 4<n1>

In this example, only the query error enable bit is set.

---

### *Option query*

*\*OPT?*

Purpose: Lists the options of the instrument.

Command Syntax:

```
*OPT?<nl>
```

Response format:

```
<Inputs>,<Timebase>,<Outputs><nl>
```

Inputs is currently always 0, Timebase is “Oven 6” or “Rubidium”, Outputs is 0 or “Pulse Output” (option 75).

Example:

```
SEND-> *OPT?<nl>
```

```
READ<- 0,Rubidium,0<nl>
```

---

### *Service request enable query*

*\*SRE*

*\*SRE?*

Purpose: The SRE command sets the Service Request Enable Register bits. A bit that is set true in the SRE register enables the corresponding bit in the Status Byte Register to generate a Service Request.

Command Syntax:

```
*SRE<dec.data><nl>
```

<dec.data> = the sum (between 0 and 255) of all bits that are true.

<u>&lt;Integer&gt;</u>	<u>Status</u>
128 (Bit 7)	Measurement started
64 (Bit 6)	Request Service
32 (Bit 5)	Event status bit
16 (Bit 4)	Message available
8 (Bit 3)	Not used
4 (Bit 2)	Error available
2 (Bit 1)	Not used
1 (Bit 0)	Not used

Example:

```
SEND-> *SRE 32<nl>
```

In this example, the Event Status bit (bit 5) is set, and a Event Status bit that is set true in the Status Byte Register will generate a Service Request.

Query Syntax:

```
*SRE?<nl>
```

Returned Format:

<dec.data> = the sum (between 0 and 255) of all bits that are true.<nl>

Example:

SEND-> \*SRE?<nl>

READ<- 32<nl>

In this example, only the query error enable bit is set.

---

### *Wait-to-Continue Command*

*\*WAI*

Purpose: The wait-to-continue command prevents the frequency standard to execute any further commands and queries, until all previous commands or queries has been completed

Command Syntax:

<command>;\*WAI;<command>

## ■ GPS-receiver settings and queries

---

### *Position Hold mode*

*:GPS:POS:HOLD:STAT*

Purpose: Enables or disables Position Hold mode for the GPS-receiver

Command syntax:

:GPS:POSition:HOLD:STATe 0 | 1<nl>

0 or OFF = Position hold mode disabled

1 or ON = Position hold mode enabled

Query syntax:

:GPS:POSition:HOLD:STATe?<nl>

Response format:

0 | 1<nl>

Note: 1 = Position Hold mode is TRUE; 0 = Position Hold mode is FALSE

Example:

SEND-> :GPS:POS:HOLD:STAT?<nl>

READ<- 1<nl>

The GPS-receiver has entered position hold mode in this example

### *Antenna position*

:GPS:POS

Purpose: This command will enable the GPS-receiver's Position Hold mode, with the co-ordinates of the antenna given in the command. By sending this command, the position survey mode is skipped and the time it takes for the receiver to enter Position Hold mode is significantly reduced.

*NOTE: Use this command **only** when the exact co-ordinates are known!*

Command syntax:

```
:GPS:POSition <N | S>,<deg>,<min>,<sec>,<E | W>,<deg>,<min>,<sec>,<alt><nI>
```

Parameters:

$0^\circ \leq \text{Latitude deg} \leq 90^\circ$

$0^\circ \leq \text{Longitude deg} \leq 180^\circ$

$0' \leq \text{min} \leq 59'$

$0'' \leq \text{sec} \leq 59''.999$

$-1000.00 \text{ m} \leq \text{Altitude (m.cm)} \leq 18000.00 \text{ m}$

Note: Latitude and longitude are expressed in degrees, minutes, seconds with decimals. Altitude is expressed in meters with decimals.

NOTE 1. If wrong co-ordinates are entered, the 1pps timing accuracy is impaired.

NOTE 2. The position hold mode should be disabled (command GPS:POS:HOLD:STAT 0) before this command is given.

Query syntax:

```
:GPS:POSition?<nI>
```

Response format:

```
<N | S>,<deg>,<min>,<s.ms>,<E | W>,<deg>,<min>,<sec.ms>,<h.cm><nI>
```

Note: Latitude and longitude are expressed in degrees, minutes, seconds with 3 decimals. Altitude is expressed in meters with 2 decimals.

Example:

```
SEND-> :GPS:POS?<nI>
```

```
READ<- N,31,41,59.141,E,14,21,47.210,23.11<nI>
```

In this example, the position is as follows:

Latitude: N 31° 41' 59.141''

Longitude: E 14° 21' 47.210''

Altitude: 23.11 m

---

**Surveying satellites for position** **:GPS:POS:SURV:STAT**

Purpose: Enables Automatic satellite survey mode

Command syntax:

```
:GPS:POSition:SURVey:STATe ONCE<nl>
```

Parameters:

Parameter ONCE starts automatic surveying. This surveying mode ends when the GPS receiver has accrued

10000 position fixes.

Query syntax:

```
:GPS:POSition:SURVey:STATe?<nl>
```

Response format:

```
0 | 1<nl>
```

Note: 1 = Surveying mode is TRUE; 0 = Surveying mode is FALSE

Example:

```
SEND-> :GPS:POS:SURV:STAT?<nl>
```

```
READ<- 0<nl>
```

The GPS-receiver is not in the surveying mode in this example

---

**Satellite tracking elevation mask** **:GPS:SAT:TRAC:EMAN**

Purpose: Enables a minimum elevation mask angle for satellites to track.

Command syntax:

```
:GPS:SATellite:TRACking:EMANgle <numeric data><nl>
```

Note: <numeric data> is the minimum (mask) elevation angle of the satellites to track. Range is 0-89 degrees. 0 degrees means no masking 89 degrees means only satellites passing right above the antenna (90 degrees) are tracked. The value is stored in the non-volatile memory.

Query syntax:

```
:GPS:SATellite:TRACking:EMANgle?<nl>
```

Response format:

```
<numeric data><nl>
```

Example:

```
SEND-> :GPS: SAT:TRAC:EMAN 30<nl>
```

```
SEND-> :GPS: SAT:TRAC:EMAN?<nl>
```

```
READ<- 30<nl>
```

## Appendix

---

---

### *Satellite tracking data*

*:GPS:SAT:TRAC?*

Purpose: Retrieves list of tracked satellites.

Query syntax:

`:GPS:SATellite:TRACking?<nl>`

Response format:

`<list><nl>`

Note: `<list>` Returns zero if there are no satellites tracked.

Example:

`SEND-> :GPS: SAT:TRAC:?:<nl>`

`READ<- 7,12,15<nl>`

In this case the satellites with IDs 7, 12, 15 were tracked.

---

### *Satellite tracking data*

*:GPS:SAT:TRAC:COUN?*

Purpose: Retrieves the number of tracked satellites.

Query syntax:

`:GPS:SATellite:TRACking:COUNt?<nl>`

Response format:

`<numeric data><nl>`

Example:

`SEND-> :GPS: SAT:TRAC:COUN?<nl>`

`READ<- 6<nl>`

---

### *Satellite status*

*:GPS:STAT?*

*:SYST:STAT?*

Purpose: Returns system status of the GPS receiver.

Query syntax:

`:GPS:STATe?<nl>`

`:SYSTem:STATe?<nl>`

Response format:

`date,time,latitude,longitude,altitude,velocity,heading,DOP,DOP-type,vis,trac,  
ChanData,ChanData,ChanData,ChanData,ChanData,ChanData,ChanData,ChanData,rs<nl>`

Date: `yyyy:[m]m:[d]d`

Time: `[h]h:[m]m:[s]s`

Latitude: `(N|S):[dd]d:[m]m:[s]s.[ff]f`

Longitude: (E|W):[dd]d:[m]m:[s].[ff]f  
 Altitude: [m\*].[f]f  
 Velocity in cm/s, 0 .. 51400 (0 .. 514.00 m/s)  
 Heading in 0.1 degrees, 0 .. 3599 (0.0 .. 359.9 degrees)  
 DOP in 0.1 resolution, 0 .. 999 (0.0 .. 99.9 DOP)  
 DOP-type  
 Vis: Number of visible satellites  
 Trac: Number of tracked satellites  
 8\* ChanData: <Satellite ID>:<Track mode>:<Signal strength>:<Channel status>  
 RS: Receiver status

Example:

SEND-> :GPS:STAtE?<nl>

READ<- 1999:11:29,16:20:7,N:59:22:17.912,E:17:51:10.597,60.27,0,0,0,1,10,5,29:0:0:0,8:8:42:  
170,9:8:45:170,5:8:42:170,4:0:0:0,24:8:37:170,30:8:45:170,7:0:0:40,8<nl>

---

### *Predicted visible satellite IDs*

:GPS:SAT:VIS:PRED?

Purpose: Retrieves the satellite IDs of predicted visible satellites.

Query syntax:

:GPS:SATellite:VISible:PREDicted?<nl>

Response format:

<list><nl>

Note: <list> Returns zero if there are no satellites visible and during start up.

Example:

SEND-> :GPS:SAT:VIS:PRED?<nl>

READ<- 6,8,13,14,17,21,23<nl>

---

### *Predicted visible satellite count*

:GPS:SAT:VIS:PRED:COUN?

Purpose: Retrieves the number of predicted visible satellites.

Query syntax:

:GPS:SATellite:VISible:PREDicted:COUNT?<nl>

Response format:

<numeric data><nl>

Example:

SEND-> :GPS: SAT:VIS:PRED:COUN?<nl>

READ<- 11<nl>

### *Predicted visible satellite data* :GPS:SAT:VIS:PRED:POS?

Purpose: List of predicted visible satellite positions.

Query syntax:

```
:GPS:SATellite:VISible:PREDicted:POSition?<n>
```

Response format:

```
n[,ID:d:e:a:h]*<n> (satellite info is listed n times. Data from maximum 12 satellites)
```

n = number of visible sats

ID = satellite ID (1 .. 32)

d = doppler frequency in Hz (-5000 .. 5000)

e = elevation in degrees (0 .. 90)

a = azimuth in degrees 0 .. 359

h = sat health:

0 = healthy & not removed

1 = healthy & removed

2 = unhealthy & not removed

3 = unhealthy & removed

Note: The number of visible satellites may be more than 12, but there will only be data from maximum 12 satellites.

Example:

```
SEND-> :GPS:SATellite:VISible:PREDicted:POSition?<n>
```

```
READ<- 12,4:1214:31:83:0,5:41:82:177:0,6:3733:8:210:0,7:3322:13:49:0,  
8:3812:21:142:0,9:3092:40:154:0,14:816:11:5:0,16:2634:0:42:0,24:3137:19:125:0,  
25:3623:1:310:0,29:856:36:272:0,30:2706:43:259:0<n>
```

In this example there are 12 predicted visible satellites with IDs number 4, 5, 6, 7, 8, 9, 14, 16, 24, 25, 29 and 30



---

**Setting antenna delay time****:GPS:REF:ADEL**

Purpose: Set delay time for used antenna cable.

Command syntax:

:GPS:REFerence:ADELay &lt;delay time&gt;&lt;nl&gt;

Note: &lt;delay time&gt; (numeric data) is expressed in seconds, with 1ns resolution. The value setting is stored in non-volatile memory.

Example:

SEND-&gt; :GPS:REF:ADEL 101E-9&lt;nl&gt;

In this example, the delay value for the option 02 antenna cable (20 m coaxial RG213 cable) is entered, i.e. 101 ns

Query syntax:

:GPS:REFerence:ADELay?&lt;nl&gt;

Response format:

&lt;numeric data&gt;&lt;nl&gt;

---

**1 pps signal status****:GPS:REF:VAL?**

Purpose: Retrieve validity of 1 pps signal of the GPS-receiver.

Query syntax:

:GPS:REFerence:VALid?&lt;nl&gt;

Response format:

0 | 1&lt;nl&gt;

Example:

SEND-&gt; :GPS:REFerence:VALid?&lt;nl&gt;

READ&lt;- 1&lt;nl&gt;

---

**1 pps signal status****:GPS:REF:STAT?**

Purpose: Returns status of the GPS 1 pps system.

Query syntax:

:GPS:REFerence:STATe?&lt;nl&gt;

Response format:

ID:ID:ID:ID:ID:ID:ID:ID,LTE:LTE:LTE:LTE:LTE:LTE:LTE:LTE,LTE,LTE,limit,sigma,1pps,sol,stat,alg,p  
ulse,sync<nl>

ID = Satellite ID \* 8

LTE = Local Time Estimate \* 8 in ns, 0 .. 999 999 999

limit = Time RAIM alarm limit in 100s of ns, 3 .. 65535

sigma = Time solution one sigma accuracy estimate in ns, 0 .. 65535

1pps = 1 PPS control mode:

0 = always off

1 = always on

2 = on when at least one satellite

3 = on when RAIM algorithm OK

sol = Time RAIM solution status:

0 = OK

1 = alarm

2 = unknown (due to threshold too low, RAIM algorithm off or insufficient satellites)

stat = Time RAIM status:

0 = detection and isolation possible

1 = detection only possible

2 = neither possible

alg = Time RAIM algorithm on/off, 1 = on, 0 = off

pulse = Pulse status, 1 = on, 0 = off

sync = 1 PPS pulse sync, 1 = GPS, 0 = UTC

Example:

```
SEND-> GPS:REfERENCE:STATe?<nl>
```

```
READ<- 29:8:9:5:4:24:30:7,371501:457686:457526:457553:835812:457646:457537:  
923080,10,49,1,0,0,1,1,0,<nl>
```

### ■ Synchronization of GPS-received signal with local oscillator

---

*Hold-over duration*

*:SYNC:HOLD:DUR?*

Purpose: Retrieve latest hold-over duration and status.

Query syntax:

```
:SYNChronization:HOLDover:DURation?<nl>
```

Response format:

```
<duration>,0|1<nl>
```

Note: <duration> (numeric data) of current or most recent hold-over period is expressed in seconds with 30s resolution. The status tells if the instrument is currently in hold-over (1) or not (0). The response is 0,0 at start up.

Example:

```
SEND-> :SYNC:HOLD:DUR?<nl>
```

```
READ<- 150,1<nl>
```

The instrument has been in hold-over for 150s and is still in hold-over.

---

*Selecting manual Hold-over mode**:SYNC:HOLD:INIT  
:CAL:AUTO OFF*

Purpose: Set manual hold-over mode

Command syntax:

:SYNChronization:HOLDover:INITiate or CALibrate:AUTO OFF

Example:

SEND-&gt; :SYNC:HOLD:INIT

---

*Selecting GPS-disciplined mode**:SYNC:HOLD:REC:INIT  
:CAL:AUTO ON*

Purpose: Set GPS-disciplined mode

Command syntax:

:SYNChronization:HOLDover:RECover:INITiate or CALibrate:AUTO ON

Example:

SEND-&gt; :CAL:AUTO ON

---

*Operational mode**:SYNC:STAT?*

Purpose: Retrieve current status of frequency standard mode

Query syntax:

:SYNChronization:STATe?&lt;nl&gt;

Response format:

HOLD|LOCK|WAIT|POW&lt;nl&gt;

Note: HOLD= Manual Hold-over mode; LOCK=GPS-disciplined mode; WAIT = Waiting to Lock (Hold-Over due to insufficient GPS-satellite contact); POW = Power-up state

Example:

SEND-&gt; :SYNC:STAT?&lt;nl&gt;

READ&lt;- LOCK&lt;nl&gt;

### *Frequency output signal quality*

*:SYNC:FFOM?*

Purpose: Retrieve "Frequency Figure of Merit" for Frequency Reference Output

Query syntax:

```
:SYNChronization:FFOMerit?<n!>
```

Response format:

```
0-3<n!>
```

0 is highest value and indicates a sufficiently long monitoring and lock of the local frequency oscillator.

1 indicates lock to GPS at all of the local frequency oscillator.

2 indicates hold-over.

3 indicates poor output signal during start up.

Example:

```
SEND-> :SYNC:FFOM?<n!>
```

```
READ<- 3 <n!>
```

---

## ■ Time and date command

---

*Get time* :SYST:TIME?  
:PTIM:TIME?

Query Syntax:

```
:SYST:TIME?<nl>  
:PTIMe:TIME?<nl>
```

Response format:

```
<hh,mm,ss><nl>
```

Note: The seconds field may be 60 if there is a leap second.

Example:

```
SEND-> :SYST:TIME?<nl>  
READ<- :13,04,27 <nl>
```

---

*Get date* :SYST:DATE?  
:PTIM:DATE?

Query Syntax:

```
:SYSTem:DATE?<nl>  
:PTIMe:DATE?<nl>
```

Response format:

```
<yyyy,mm,dd> <nl>
```

Example:

```
SEND-> :SYST:DATE?<nl>  
READ<- :1999,08,12<nl>
```

---

*Set timezone* :SYST:TZON  
:PTIM:TZON

Command Syntax:

```
:SYSTem:TZONe <hh,mm><nl>  
:PTIMe:TZONe <hh,mm><nl>
```

Note: The user must manually correct for daylight saving time! The value setting is stored in non-volatile memory.

Example:

```
SEND-> :SYSTem:TZONe 1,0<nl>
```

## Appendix

---

This sets the time zone to GMT+1 and no daylight saving time.

Query Syntax:

```
:SYSTem:TZONE?<nl>
:PTIMe:TZONE?<nl>
```

Response format:

```
<[h]h,[m]m> <nl>
```

Example:

```
SEND-> :SYSTem:TZONE?<nl>
READ<- 1,0<nl>
```

---

*Leap second difference between UTC and GPS time* :PTIM:LEAP:ACC?

Query Syntax:

```
:PTIMe:LEAPsecond:ACCumulated?<nl>
```

Response format:

```
<numeric data><nl>
```

Example:

```
SEND-> :PTIMe:LEAPsecond:ACCumulated?<nl>
READ<- 13<nl>
```

---

*Leap second pending?* :PTIM:LEAP:STAT?

Purpose: Tells if there's a leap second pending at the end of month. Several weeks before a pending leap second, the GPS system broadcasts a special message notifying the user of the event.

Query syntax:

```
:PTIMe:LEAPsecond:STATus?<nl>
```

Response format:

```
:0 | 1<nl>
```

Example:

```
SEND-> :PTIMe:LEAPsecond:STATe?<nl>
READ<- 1<nl>
```

In this example, a leap second is pending.

---

*Leap minute duration**:PTIM:LEAP:DUR?*

Purpose: The duration of the minute at next leap time.

Query syntax:

```
:PTIM:LEAPsecond:DURation?<nl>
```

Response format:

```
:59 | 60 | 61<nl>
```

Example:

```
SEND-> :PTIM:LEAPsecond:DURation?<nl>
READ<- 61<nl>
```

A leap second will be inserted at the leap time.

## ■ Display commands

---

*Display feed**:DISP:TEXT:FEED?*

Purpose: To set or query the primary display feed. This determines what data will be fed to the display (if available).

Command Syntax:

```
:DISPlay[:WINDow]:TEXT:FEED DEV24|TIME<nl>
```

The options are DEV24 for 24h frequency deviation and TIME for current time.

Query syntax:

```
:DISPlay[:WINDow]:TEXT:FEED?<nl>
```

Response format:

```
:DEV24|TIME <nl>
```

Example:

```
SEND-> :DISPlay:TEXT:FEED? <nl>
READ<- DEV24<nl>
```

In this case the 24h frequency deviation is shown on the display if it is available.

---

### *Save display feed*

*:DISP:TEXT:FEED:SAVE*

Purpose: To save the current display feed setting in non-volatile memory.

Command Syntax:

```
:DISPlay[:WINDow]:TEXT:FEED:SAVE<nl>
```

Example:

```
SEND-> :DISPlay:TEXT:FEED:SAVE <nl>
READ<- <nl>
```

---

### *Restore display feed*

*:DISP:TEXT:FEED:REST*

Purpose: To restore the display feed setting from non-volatile memory.

Command Syntax:

```
:DISPlay[:WINDow]:TEXT:FEED:RESTore<nl>
```

Example:

```
SEND-> :DISPlay:TEXT:FEED:REST <nl>
READ<- <nl>
```

Display feed is restored to the value last saved in non-volatile memory (factory default is DEV24).

## ■ System commands

---

### *SCPI version query*

*:SYST:VERS?*

Purpose: Returns a numeric value corresponding to the SCPI version number that the instrument complies to.

Query syntax:

```
:SYSTem:VERSion?<nl>
```

Response format:

```
<numeric value><nl>
```

```
SEND-> :SYSTem:VERSion?<nl>
READ<- 1992.0<nl>
```

This instrument complies to version 1992.0



---

**No antenna alarm enable****:SYST:ALAR:ENAB:NOAN**

Purpose: Enables/disables the “no antenna” alarm. The alarm is enabled by default. Some antennas may draw very low current, which may be interpreted by the frequency standard as “no antenna”. If so, disable the “no antenna” alarm via this command

Note: The setting is stored in the non-volatile memory.

Command syntax:

```
:SYSTem:ALARm:ENABle:NOANtenna ON | OFF<nl>
```

```
SEND-> :SYSTem:ALARm:ENABle:NOANtenna OFF<nl>
```

Disables the no antenna alarm.

Query syntax:

```
:SYSTem:ALARm:ENABle:NOANtenna?<nl>
```

Response format:

```
0 | 1<nl>
```

Example:

```
SEND-> :SYSTem:ALARm:ENABle:NOANtenna?<nl>
```

```
READ<- 0<nl>
```

The no antenna alarm is disabled.

---

**Talk-only mode****:SYST:TALK**

Purpose: Turning on the talk-only mode causes the instrument to continuously output the results of the primary measurements on the serial interface. This means that once every 30 s there will be a message with format: <TIE><X>, where <TIE> is the measured Time Interval Error and <X> is the timestamp of the measurement (number of seconds since the first TIE measurement).

Example message:

```
READ<- -1.4608969E-06,+3.474589985391E+05<nl>
```

In this example the TIE value is -1.46  $\mu$ s and 347459 seconds (approx. 4 days) have elapsed since first TIE measurement.

Command syntax:

```
:SYSTem:TALKonly ON | OFF<nl>
```

Query syntax:

```
:SYSTem:TALKonly?<nl>
```

Response format:

```
0 | 1<nl>
```

### ■ Quick Alphabetical Overview of Commands

\*CLS?

Clear status command.

:DISP:TEXT:FEED?

Display feed.

:DISP:TEXT:FEED:SAVE

Save display feed.

:DISP:TEXT:FEED:RES

Restore display feed.

\*ESE?

Standard event status enable.

\*ESR?

Read event status register.

:GPS:POS?

Installed antenna position.

:GPS:POS:HOLD:STAT?

Position hold query.

:GPS:POS:SURV:STAT

Surveying satellites for position.

:GPS:REF:ADEL

Setting antenna delay time.

:GPS:REF:VAL / :GPS:REF:STAT

1pps signal status.

:GPS:STAT? / :SYST:STAT?

Satellite status.

:GPS:SAT:TRAC?

Satellite tracking data.

:GPS:SAT:TRAC:COUNT?

Satellite tracking data.

:GPS:SAT:TRAC:EMAN

Satellite tracking elevation mask.

:GPS:SAT:VIS:PRED?

Predicted visible satellite IDs.

:GPS:SAT:VIS:PRED:COUN?

Predicted visible satellite count.

:FETCh?

Retrives one measuring result from the measurement result buffer of the frequency standard.

:GPS:SAT:VIS:PRED:POS?

Predicted visible satellite data.

\*IDN?

Identification query.

\*OPC?

Synchronizes instrument operations and controller.

\*OPT?

Option query.

:OUTP

Shows if the pulse output option is installed or not.

:PTIM:LEAP:ACC?

Leap second difference between UTC and GPS time.

:PTIM:LEAP:DUR?

Leap minute duration.

:PTIM:LEAP:STAT?

Leap second pending?

\*PUD?

Protected User Data, setting and query.

\*RST

Reset.

:SOUR:PULSe

Selects period and pulse width of the programmable pulse output.

\*SRE?

Service request enable query.

*STB? Status byte query.	:SYST:TIME? / :PTIM:TIME Get time.
:STAT:OPER? Read status operation event register.	:TZON / PTIM:TZON Set timezone.
:STAT:OPER:COND? Read status operation condition register.	:SYST:VERS? SCPI version query.
:SYNC:FFOM? Frequency output signal quality.	:SYST:TALK Talk-only mode.
:SYNC:HOLD:DUR? Hold-over duration.	:TEST:SEL Selects which internal self-tests to run when the *TST command is received.
:SYNC:HOLD:INIT / :CAL:AUTO OFF Selecting manual Hold-over mode.	:TRACe? Retrieves a stored array of TIE-measurements.
:SYNC:HOLD:REC:INIT / :CAL:AUTO ON Selecting GPS-disciplined mode.	:TRACe:ARC24H? Fetch data array 24h frequency offset (non-volatile archive).
:SYNC:STAT? Operational mode.	:TRACe:DEV1H? / :TRACe:DEV24H? Fetch data array 1h or 24h frequency offset (RAM).
:SYST:ALAR:ENAB:NOAN No antenna alarm enable.	:TRACe:TIE? Fetch data array TIE.
:SYST:DATE? / :PTIM:DATE? Get date.	*TST? Make self test.
:SYST:ERR? Error code and explanation of bus commands.	*WAI Wait-to-Continue command.
:SYST:KLOC Locks the keyboard to prevent user intervention when the frequency standard is under program control.	

## Appendix 4, Remote Error Messages

This appendix lists all possible error codes in the frequency standards. Note that the list below is a “generic list” of error messages, that can occur in SCPI instruments. Not all type of listed errors can occur in the 910 or 910R frequency standards. You read the error queue with the:

```
:SYSTem:ERRor? query.
```

Example:

```
SEND-> :SYSTem:ERRor?
READ<- -100, "Command Error"
```

The query returns the error number followed by the error description. If more than one error occurred, the query will return the error that occurred first. When you read an error, you will also remove it from the queue. You can read the next error by repeating the query. When you have read all errors, the queue is empty, and the :SYSTem:ERRor? Query will return: 0, "No error" When errors occur and you do not read these errors, the Error Queue may over-flow. Then the instrument will overwrite the last error in the queue with: -350, "Queue overflow" If more errors occur after that, they will be discarded.

Number	Description	Number	Description
0	No Error	-123	Exponent too large
-100	Command error	-124	Too many digits
-101	Invalid character	-128	Numeric data not allowed
-102	Syntax error; unrecognized data	-130	Suffix error
-102	Syntax error	-131	Invalid suffix
-103	Invalid separator	-134	Suffix too long
-104	Data type error	-138	Suffix not allowed
-108	Parameter not allowed	-140	Character data error
-109	Missing parameter	-141	Invalid character data
-110	Command header error	-144	Character data too long
-111	Header separator error	-148	Character data not allowed
-112	Program mnemonic too long	-150	String data error
-113	Undefined header	-151	Invalid string data; unexpected end of message
-114	Header suffix out of range	-151	Invalid string data
-120	Numeric data error	-158	String data not allowed
-120	Numeric data error; overflow from conversion	-160	Block data error
-120	Numeric data error; underflow from conversion	-161	Invalid block data
-120	Numeric data error; not a number from conversion	-168	Block data not allowed
-120	Numeric data error; not a number from conversion	-170	Expression data error
-121	Invalid character in number	-170	Expression data error; different number of channels given

Number	Description	Number	Description
-170	Expression data error; floating point underflow	-222	Data out of range; exponent too large
-170	Expression data error; floating point overflow	-222	Data out of range
-170	Expression data error; not a number	-222	Data out of range; above maximum
-171	Invalid expression data	-222	Data out of range; requires attenuator on
-171	Invalid expression data; unrecognized expression type	-222	Data out of range; below minimum
-171	Invalid expression data; bad mnemonic	-223	Too much data; PUD string too long
-171	Invalid expression data; illegal element	-223	Too much data; String or block too long
-171	Invalid expression data; unexpected end of message	-223	Too much data
-178	Expression data not allowed	-224	Illegal parameter value
-180	Macro error	-230	Data corrupt or stale
-181	Invalid outside macro definition	-231	Data questionable; one or more data fields ignored
-183	Invalid inside macro definition	-231	Data questionable
-184	Macro parameter error	-240	Hardware error
-184	Macro parameter error; parameter count mismatch	-241	Hardware missing
-184	Macro parameter error; unused parameter	-250	Mass storage error
-184	Macro parameter error; badly formed placeholder	-251	Missing mass storage
-200	Execution error	-252	Missing media
-201	Invalid while in local	-253	Corrupt media
-202	Settings lost due to rtl	-254	Media full
-210	Trigger error	-255	Directory full
-211	Trigger ignored	-256	File name not found
-213	Init ignored	-257	File name error
-214	Trigger deadlock	-258	Media protected
-220	Parameter error	-260	Expression error
-221	Settings conflict; invalid combination of channel and function	-261	Math error in expression
-221	Settings conflict	-270	Macro error; out of definition space
-221	Settings conflict; PUD memory is protected	-270	Macro error; out of name space
-222	Data out of range; (Save/recall memory nr.)	-270	Macro error
		-271	Macro syntax error
		-272	Macro execution error
		-273	Illegal macro label
		-274	Macro parameter error
		-275	Macro definition too long
		-276	Macro recursion error
		-277	Macro redefinition not allowed
		-278	Macro header not found
		-280	Program error

## Appendix

---

Number	Description	Number	Description
-281	Cannot create program	-350	Queue overflow
-282	Illegal program name	-400	Query error
-283	Illegal variable name	-410	Query INTERRUPTED
-284	Program currently running	-410	Query INTERRUPTED; in query state
-285	Program syntax error	-410	Query INTERRUPTED; in send state
-286	Program runtime error	-410	Query INTERRUPTED; in response state
-300	Device-specific error	-420	Query UNTERMINATED
-310	System error	-420	Query UNTERMINATED; in send state
-311	Memory error	-420	Query UNTERMINATED; in idle state
-312	PUD memory lost	-420	Query UNTERMINATED; in read state
-313	Calibration memory lost	-430	Query DEADLOCKED
-315	Configuration memory lost	-440	Query UNTERMINATED after indefinite response
-330	Self-test failed		

## DEVICE SPECIFIC ERRORS

1100	Device operation gave floating point underflow	1211	Wrong macro table checksum found
1101	Device operation gave floating point overflow	1212	Wrong hash table checksum found
1102	Device operation gave 'not a number'	1213	RAM failure to hold info. (hash table)
1110	Invalid measurement function	1214	Hash table overflow
1120	Save/recall memory protected	1220	Parser error
1130	Unsupported command	1221	Illegal parser call
1131	Unsupported boolean command	1222	Unrecognized input character
1132	Unsupported decimal command	1223	Internal parser error
1133	Unsupported enumerated command	1230	Response formatter error
1134	Unsupported auto command	1231	Bad response formatter call
1135	Unsupported single shot command	1232	Bad response formatter call (eom)
1136	Command queue full; last command discarded	1233	Invalid function code to response formatter
1137	Inappropriate suffix unit	1234	Invalid header type to response formatter
1138	Unexpected command to device execution	1235	Invalid data type to response formatter
1139	Unexpected query to device execution	1240	Unrecognized error number in error queue
1150	Bad math expression format	1300	Calibration error reading upper limit
1160	Measurement broken off	1301	Calibration error reading lower limit
1170	Instrument set to default	1302	Calibration reading difference (Max-Min)
1180	Bad setup data length	1303	Calibration error reading at Max
1181	Bad setup data checksum	1304	Calibration error reading at Min
1190	Error during calibration	1305	Calibration base level error
1200	Message exchange error	1306	Calibration scale factor error
1201	Reset during bus input	1307	Calibration hysteresis error
1202	Reset during bus output	1308	Calibration error noise at comparator
1203	Bad message exchange control state	1309	Calibration error signal above range
1204	Unexpected reason for interrupt	1310	Calibration error signal below range
1210	Mnemonic table error		

This page is intentionally left blank.



**Chapter 9**

# **Index**

# Index

- !**
- \*CLS? . . . . . 8-25
  - \*ESE . . . . . 8-25
  - \*ESE? . . . . . 8-25
  - \*ESR? . . . . . 8-24
  - \*IDN? . . . . . 8-21
  - \*OPC? . . . . . 8-22
  - \*OPT? . . . . . 8-26
  - \*PUD? . . . . . 8-22
  - \*RST . . . . . 8-23
  - \*SRE . . . . . 8-26
  - \*SRE? . . . . . 8-26
  - \*STB? . . . . . 8-23
  - \*TST? . . . . . 8-23
  - \*WAI . . . . . 8-27
  - :CAL:AUTO OFF . . . . . 8-35
  - :CAL:AUTO ON . . . . . 8-35
  - :FETCh? . . . . . 8-13
  - :GPS:POS:HOLD:STAT? . . . . . 8-27
  - :GPS:POS:SURV:STAT . . . . . 8-29
  - :GPS:POS? . . . . . 8-28
  - :GPS:REF:ADEL . . . . . 8-33
  - :GPS:REF:STAT . . . . . 8-33
  - :GPS:REF:VAL . . . . . 8-33
  - :GPS:SAT:TRAC:COUN? . . . . . 8-30
  - :GPS:SAT:TRAC:EMAN . . . . . 8-29
  - :GPS:SAT:TRAC? . . . . . 8-30
  - :GPS:SAT:VIS:PRED:COUN? . . . . . 8-31
  - :GPS:SAT:VIS:PRED:POS? . . . . . 8-32
  - :GPS:SAT:VIS:PRED? . . . . . 8-31
  - :GPS:STAT? . . . . . 8-30
  - :OUTP . . . . . 8-17
  - :PTIM:DATE? . . . . . 8-37
  - :PTIM:LEAP:ACC? . . . . . 8-38
  - :PTIM:LEAP:DUR? . . . . . 8-39
  - :PTIM:LEAP:STAT? . . . . . 8-38
  - :PTIM:TIME? . . . . . 8-37
  - :PTIM:TZON . . . . . 8-37
  - :SOUR:PULSe . . . . . 8-17
  - :STAT:OPER:COND? . . . . . 8-19
  - :STAT:OPER? . . . . . 8-18
  - :SYNC:FFOM? . . . . . 8-36
  - :SYNC:HOLD:DUR? . . . . . 8-34
  - :SYNC:HOLD:INIT . . . . . 8-35
  - :SYNC:HOLD:REC:INIT . . . . . 8-35
  - :SYNC:STAT? . . . . . 8-35
  - :SYST:ALAR:ENAB:NOAN . . . . . 8-41
  - :SYST:DATE? . . . . . 8-37
  - :SYST:ERR? . . . . . 8-20
  - :SYST:KLOC . . . . . 8-20
  - :SYST:STAT? . . . . . 8-30
  - :SYST:TALK . . . . . 8-41
  - :SYST:TIME? . . . . . 8-37
  - :SYST:TZON . . . . . 8-37
  - :SYST:VERS? . . . . . 8-40
  - :TEST:SEL . . . . . 8-21
  - :TRACe:ARC24H? . . . . . 8-16
  - :TRACe:DEV1H? . . . . . 8-15
  - :TRACe:DEV24H? . . . . . 8-15
  - :TRACe:TIE? . . . . . 8-14
  - :TRACe? . . . . . 8-13
  - 1 pps Out . . . . . 5-3
  - 10 MHz Out . . . . . 5-3
  - 5 MHz Out . . . . . 5-3
- A**
- Acquire . . . . . 4-5
  - Alphabetical overview of commands. . . . . 8-42
  - Antenna . . . . . 7-5
  - Antenna cable . . . . . 7-5
  - Antenna installation . . . . . 2-8,8-2
  - Antenna location. . . . . 8-2
  - Appendix . . . . . 8-1
  - Attenuators . . . . . 8-7
  - Auxiliary components . . . . . 8-7

**B**

- Bar graph display . . . . . 3-2
- Basic controls . . . . . 3-2
- Basic programming information . . . . . 8-10

**C**

- Calibration . . . . . 6-2
- Calibration history . . . . . 1-2
- Calibration protocol . . . . . 4-4
- Case classification . . . . . 8-4
- Cesium-standards . . . . . 1-2
- Check list . . . . . 2-4
- Coaxial adapters . . . . . 8-7
- Coaxial cables . . . . . 8-7
- Command reference . . . . . 8-10
- Connecting to a PC . . . . . 2-8

**D**

- Declaration of Conformity . . . . . I-V
- Default mode . . . . . 1-3
- Deviations from the standard configuration. 8-3
- Device error messages . . . . . 8-9
- Dimensions and weight . . . . . 7-5
- Disciplining . . . . . 1-2
- Disclaimer . . . . . I-IV
- Display indicators . . . . . 7-4

**E**

- Edit . . . . . 4-7
- Edit graphs . . . . . 4-9
- Edit the x-axis . . . . . 4-9
- Edit the y-axis . . . . . 4-9
- Editing marker lines . . . . . 4-10
- Environmental . . . . . 7-5
- Environmental conditions . . . . . 8-5
- Error messages . . . . . 8-9
- Example language . . . . . 8-10

**F**

- Fan . . . . . 7-5
- Fan control . . . . . 2-6
- Fan replacement . . . . . 6-2
- FILE menu . . . . . 4-4
- File storage . . . . . 4-2

- First time installation . . . . . 8-10
- Fold-down support . . . . . 2-6
- Frequency offset calculation test . . . . . 5-3
- Frequency stability . . . . . 7-2
- Functional description . . . . . 3-4
- Fuse . . . . . 2-2

**G**

- GPS satellites . . . . . 1-2
- GPS-receiver . . . . . 7-5
- GPS-View . . . . . 4-1
- GPS-View screen . . . . . 4-3
- Graphical display . . . . . 4-2
- Graphs in GPS-View . . . . . 4-8
- Grounding . . . . . 2-2

**H**

- Help . . . . . 4-7
- High-frequency interference . . . . . 8-3
- Hold-over mode . . . . . 1-3

**I**

- Identification . . . . . 2-4
- Included accessories . . . . . 7-6
- Indicators . . . . . 3-6
- Installation . . . . . 2-5
- Instrument . . . . . 4-5
- Interference . . . . . 8-3
- Internal data storage . . . . . 7-4
- Introduction . . . . . 1-2
- Introduction to programming . . . . . 8-10

**K**

- Keyboard and indicator test . . . . . 5-3

**L**

- LED indicators . . . . . 7-4
- Lightning arresters . . . . . 8-7
- Line amplifiers . . . . . 8-7
- Long-term uncertainty . . . . . 3-4

**M**

- Mean offset . . . . . 1-2
- Measurement principle . . . . . 3-5
- Mounting masts . . . . . 8-8

Multi-path reception . . . . . 8-3

## N

National standards . . . . . 1-3

## O

Operating modes . . . . . 1-3

Option 70 outputs . . . . . 7-3

Option 70 (10 MHz) . . . . . 5-3

Option 71 outputs . . . . . 7-3

Option 71 (0.1 to 10 MHz) . . . . . 5-3

Option 72 outputs . . . . . 7-3

Option 72 (2.048 MHz) . . . . . 5-4

Option 75 output . . . . . 7-3

Option 75 (Pulse Output) . . . . . 5-4

Optional accessories . . . . . 7-6

Optional outputs . . . . . 1-2

Order of Execution . . . . . 8-12

Ordering information . . . . . 7-6

Orientation and cooling . . . . . 2-5

Overview of command subsystems . . . . . 8-11

## P

PC-connection . . . . . 7-5

Performance check . . . . . 5-1

Phase noise . . . . . 7-2

Power consumption . . . . . 7-5

Power splitters . . . . . 8-7

Power-On test . . . . . 5-2

Practical examples . . . . . 8-5

Preface . . . . . 1-1

Preparation for use . . . . . 2-1

Preventive maintenance . . . . . 6-1

Print-out . . . . . 4-2

Program sequence . . . . . 8-12

Protection against lightning strikes . . . . . 8-4

## R

Rack mount adapter . . . . . 2-6

Rear panel . . . . . 3-3

Recommended test equipment . . . . . 5-2

Remote error messages . . . . . 8-44

## S

Safety instructions . . . . . 2-2

SCPI programming language . . . . . 8-10

Short summary of syntax . . . . . 8-11

Specifications . . . . . 7-1

Standard configuration . . . . . 8-3

Standard reference outputs . . . . . 7-3

Supply voltage . . . . . 2-5

Symbols . . . . . 2-2

## T

Test of PC-connection . . . . . 5-4

Text display . . . . . 4-2

TIE . . . . . 3-5

Traceable frequency standard . . . . . 1-2

Transfer of archived data . . . . . 4-2

Transfer of control commands . . . . . 4-2

Transfer of stored data . . . . . 4-2

Typographic conventions . . . . . 8-11

## U

Unpacking . . . . . 2-4

Using the controls . . . . . 3-1

## V

View . . . . . 4-7

## W

Warranty Statement . . . . . I-IV

Window menu . . . . . 4-7

## Chapter 10

# Service

# Sales and Service Office

For service information, contact your Fluke service center. To locate an authorized service center, visit us on the World Wide Web: <http://www.fluke.com> , or call Fluke using any of the phone numbers listed below:

+1-888-993-5853 in U.S.A and Canada

+31-402-687-200 in Europe

+1-425-356-5500 from other countries